

# **\$6,250,000 - 27525 79 Avenue, Stony Plain**

MLS® #E4382565

**\$6,250,000**

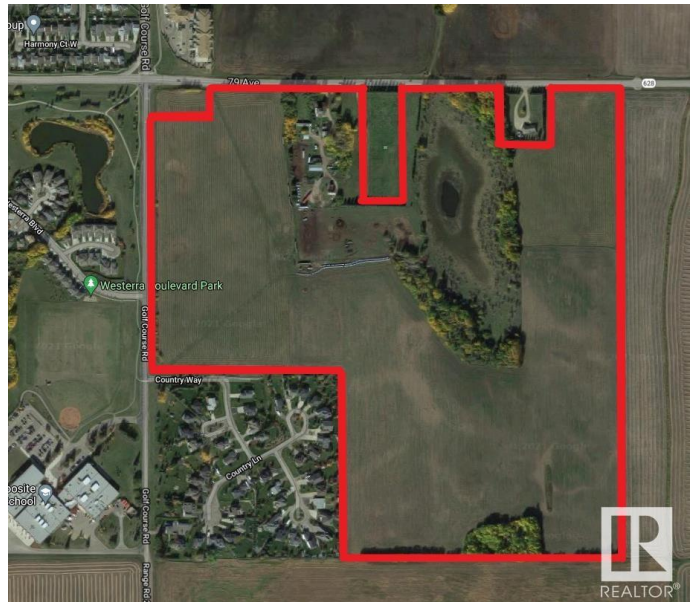
0 Bedroom, 0.00 Bathroom,  
Land Commercial on 0.00 Acres

None, Stony Plain, AB

Exceptional opportunity for future development with this 124-acre +/- parcel in the Town of Stony Plain! Positioned prominently on the corner of a busy intersection where Golf Course Road meets Highway 628/79 Ave. This property has excellent exposure, with an estimated 4,480 vehicles per day on Highway 628 and 3,900 vehicles per day on Golf Course Road. The potential here is vast, spanning from high to low density residential and commercial retail development possibilities. This large and distinctive parcel benefits from municipal water and sewer lines adjacent to the property. Conveniently located near multiple residential communities and across from Stony Plain Memorial Composite High School, it currently serves as farmland with a residence on-site. Just a mere 15 minutes from the Acheson Industrial Area and a quick 25-minute drive to Edmonton. Zoned FD (Future Development).

## **Essential Information**

MLS® #	E4382565
Price	\$6,250,000
Bathrooms	0.00
Acres	0.00
Type	Land Commercial
Status	Active



**Community Information**

Address	27525 79 Avenue
Area	Stony Plain
Subdivision	None
City	Stony Plain
County	ALBERTA
Province	AB
Postal Code	T7Z 1R3

**Additional Information**

Date Listed	April 15th, 2024
Days on Market	518
Zoning	Zone 91

DATA IS DEEMED RELIABLE BUT IS NOT GUARANTEED ACCURATE BY THE REALTORS® ASSOCIATION OF EDMONTON. COPYRIGHT 2025 BY THE REALTORS® ASSOCIATION OF EDMONTON. ALL RIGHTS RESERVED.Trademarks are owned or controlled by the Canadian Real Estate Association (CREA) and identify real estate professionals who are members of CREA (REALTOR®, REALTORS®) and/or the quality of services they provide (MLS®, Multiple Listing Service®)

Listing information last updated on September 15th, 2025 at 11:48am MDT