

Courtesy Of Robby Halabi Of Rimrock Real Estate

\$818,000 - 6638 Knox Place, Edmonton

MLS® #E4396006

\$818,000

4 Bedroom, 3.00 Bathroom, 2,611 sqft
Single Family on 0.00 Acres

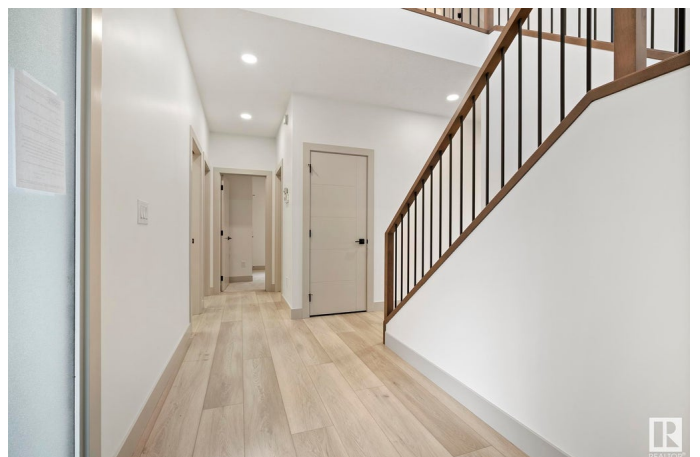
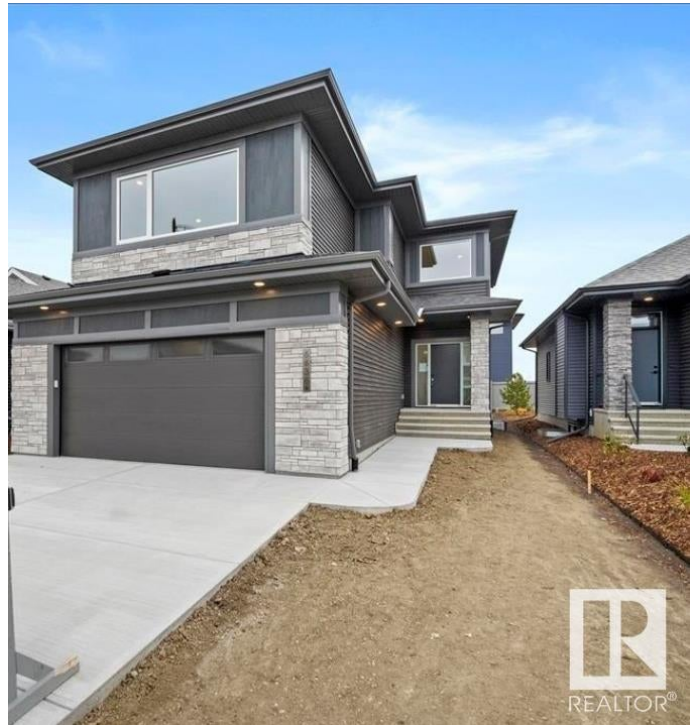
Keswick Area, Edmonton, AB

Building better homes since 1930, Fekete Homes proudly presents a contemporary custom built 2 Storey in the Arbours of Keswick. Timeless & artfully designed featuring a welcoming floor plan showcasing 9ft main floor ceilings, 4 bedrooms, 3 full baths, a spacious chef's kitchen w/modern cabinetry, quartz countertops & large center island, a convenient walk-through pantry & mudroom w/built-ins, the bright great room features expansive south facing windows accented w/luxury vinyl plank flooring throughout, main floor guest bedroom & full bath. The upper level features a well appointed primary bedroom with a full spa like en-suite & spacious walk-in closet, 2 kids bedrooms, a bonus room & laundry room. Other features of this EnerGuide efficient home include: Dual Stage Lennox furnace, commercial grade HWT, HRV, Triple pane windows and large rear deck. Fekete Homes will build & customize your dream home w/superior quality, workmanship & the highest level of personalized service.

Built in 2023

Essential Information

MLS® #	E4396006
Price	\$818,000



Bedrooms	4
Bathrooms	3.00
Full Baths	3
Square Footage	2,611
Acres	0.00
Year Built	2023
Type	Single Family
Sub-Type	Detached Single Family
Style	2 Storey
Status	Active

Community Information

Address	6638 Knox Place
Area	Edmonton
Subdivision	Keswick Area
City	Edmonton
County	ALBERTA
Province	AB
Postal Code	T6W 4A1

Amenities

Amenities	Ceiling 9 ft., Deck
Parking	Double Garage Attached

Interior

Interior Features	ensuite bathroom
Appliances	Dishwasher-Built-In, Dryer, Garage Control, Garage Opener, Hood Fan, Oven-Built-In, Oven-Microwave, Refrigerator, Stove-Countertop Electric, Washer
Heating	Forced Air-1, Natural Gas
Fireplace	Yes
Fireplaces	Insert
Stories	2
Has Basement	Yes
Basement	Full, Unfinished

Exterior

Exterior	Wood, Stone, Vinyl
Exterior Features	Airport Nearby, Cul-De-Sac, Golf Nearby, Playground Nearby, Public

	Transportation, Schools, Shopping Nearby
Roof	Asphalt Shingles
Construction	Wood, Stone, Vinyl
Foundation	Concrete Perimeter

Additional Information

Date Listed	July 5th, 2024
Days on Market	250
Zoning	Zone 56
HOA Fees Freq.	Annually

DATA IS DEEMED RELIABLE BUT IS NOT GUARANTEED ACCURATE BY THE REALTORS® ASSOCIATION OF EDMONTON. COPYRIGHT 2025 BY THE REALTORS® ASSOCIATION OF EDMONTON. ALL RIGHTS RESERVED. Trademarks are owned or controlled by the Canadian Real Estate Association (CREA) and identify real estate professionals who are members of CREA (REALTOR®, REALTORS®) and/or the quality of services they provide (MLS®, Multiple Listing Service®)

Listing information last updated on March 12th, 2025 at 8:17pm MDT