

# \$0 - 2920 101 Street, Edmonton

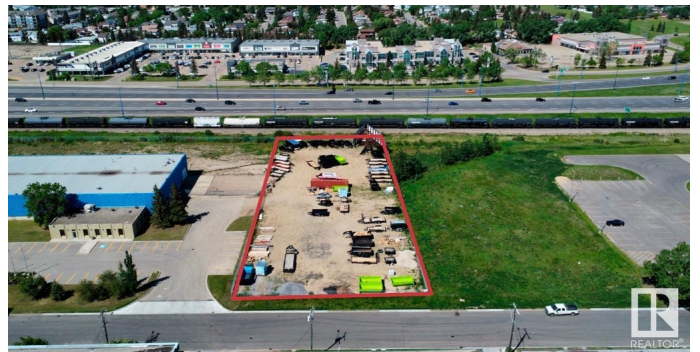
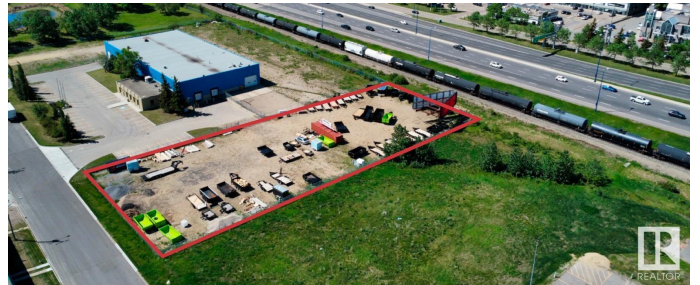
MLS® #E4402941

**\$0**

0 Bedroom, 0.00 Bathroom,  
Land Commercial on 0.00 Acres

Parsons Industrial, Edmonton, AB

Rare industrial land parcel for lease with fantastic exposure to QE2 - 1.09 acres - approximately 140 ft. x 340 ft. - Access via area to the south and south curb crossing at building (joint access) - Electric gate - fully fenced and secured - Ideal for: Equipment and trailer storage, vehicle parking, fleet parking - Excellent access to QE2, Anthony Henday and Whitemud. Power available onsite for potential office trailer.



## Essential Information

MLS® #	E4402941
Bathrooms	0.00
Acres	0.00
Type	Land Commercial
Status	Active

## Community Information

Address	2920 101 Street
Area	Edmonton
Subdivision	Parsons Industrial
City	Edmonton
County	ALBERTA
Province	AB
Postal Code	T6N 1A6

## Additional Information

Date Listed August 21st, 2024

Days on Market 203

Zoning Zone 41

DATA IS DEEMED RELIABLE BUT IS NOT GUARANTEED ACCURATE BY THE REALTORS® ASSOCIATION OF EDMONTON. COPYRIGHT 2025 BY THE REALTORS® ASSOCIATION OF EDMONTON. ALL RIGHTS RESERVED. Trademarks are owned or controlled by the Canadian Real Estate Association (CREA) and identify real estate professionals who are members of CREA (REALTOR®, REALTORS®) and/or the quality of services they provide (MLS®, Multiple Listing Service®)

Listing information last updated on March 12th, 2025 at 2:02pm MDT