

# \$139,500 - 25 52111 Range Rd 270, Rural Parkland County

MLS® #E4407995

**\$139,500**

0 Bedroom, 0.00 Bathroom,  
Land Commercial on 0.00 Acres

Sandhills Estates, Rural Parkland County, AB

Exceptional Development Opportunity at Edmonton Parkland Executive Airport! This 0.16-acre lot in the Edmonton Parkland Executive Airport offers direct access to the nearby runway, making it an ideal location for aviation-related businesses. With paved taxiways, natural gas and power to the lot, this property is ready for the construction of hangars or shops tailored to your needs. Each lot will require an independent septic and cistern system Zoned AGG, this versatile lot allows for a range of commercial or aviation development possibilities. Donâ€™t miss your chance to secure a prime spot in this growing executive airport community!

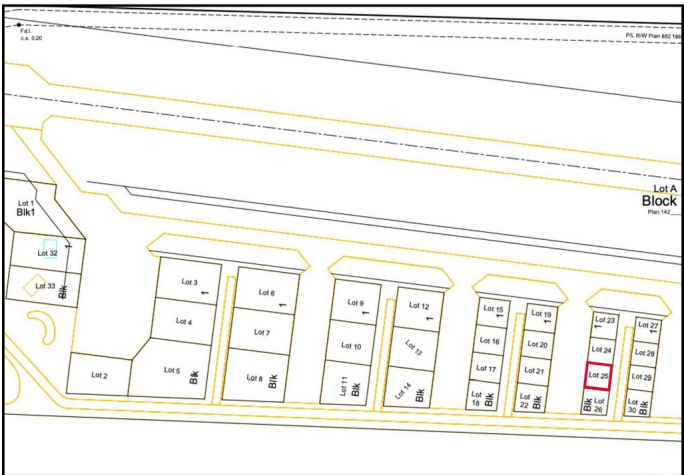


## Essential Information

MLS® #	E4407995
Price	\$139,500
Bathrooms	0.00
Acres	0.00
Type	Land Commercial
Status	Active

## Community Information

Address	25 52111 Range Rd 270
Area	Rural Parkland County



Subdivision	Sandhills Estates
City	Rural Parkland County
County	ALBERTA
Province	AB
Postal Code	T7X 3M2

### **Additional Information**

Date Listed	September 26th, 2024
Days on Market	276
Zoning	Zone 90

DATA IS DEEMED RELIABLE BUT IS NOT GUARANTEED ACCURATE BY THE REALTORS® ASSOCIATION OF EDMONTON. COPYRIGHT 2025 BY THE REALTORS® ASSOCIATION OF EDMONTON. ALL RIGHTS RESERVED. Trademarks are owned or controlled by the Canadian Real Estate Association (CREA) and identify real estate professionals who are members of CREA (REALTOR®, REALTORS®) and/or the quality of services they provide (MLS®, Multiple Listing Service®)

Listing information last updated on June 29th, 2025 at 10:32am MDT