

Courtesy Of Dragic Janjic and Dena E Sutton Of Real Broker

\$254,900 - 507 237 Youville Drive, Edmonton

MLS® #E4410573

\$254,900

2 Bedroom, 2.00 Bathroom, 1,082 sqft
Condo / Townhouse on 0.00 Acres

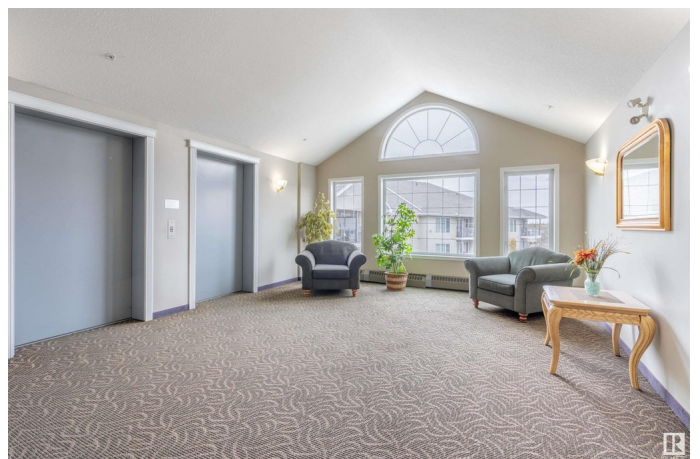
Tawa, Edmonton, AB

This top-floor condo, in a sought-after 18+ building, showcases two spacious bedrooms and two full bathrooms, highlighting meticulous care throughout. The expansive kitchen, complete with a dining area and cozy nook, seamlessly connects to the living room—ideal for hosting guests. The primary bedroom features a sizable walk-in closet and a lovely 3-piece ensuite. The second bedroom is conveniently located near the main 4-piece bathroom. Highlights of this unit include a west-facing enclosed balcony with a natural gas BBQ hookup, a gas fireplace, in-suite laundry, an underground parking spot, and vaulted ceilings. The building offers fantastic amenities such as a clubhouse, exercise room, car wash, games room, and party room. Outside, the beautifully landscaped grounds feature a pond, rock garden, and seating areas. This condo enjoys a prime location close to Grey Nuns Hospital, shopping, schools, a library, and easy access to the Anthony Henday.

Built in 2000

Essential Information

MLS® #	E4410573
Price	\$254,900
Bedrooms	2



Bathrooms	2.00
Full Baths	2
Square Footage	1,082
Acres	0.00
Year Built	2000
Type	Condo / Townhouse
Sub-Type	Lowrise Apartment
Style	Single Level Apartment
Status	Active

Community Information

Address	507 237 Youville Drive
Area	Edmonton
Subdivision	Tawa
City	Edmonton
County	ALBERTA
Province	AB
Postal Code	T6L 7G2

Amenities

Amenities	Car Wash, Club House, Exercise Room, Guest Suite, Parking-Visitor, Party Room, Patio, Recreation Room/Centre, Sauna; Swirlpool; Steam, Secured Parking, Social Rooms, See Remarks
Parking	Underground

Interior

Interior Features	ensuite bathroom
Appliances	Dishwasher-Built-In, Dryer, Oven-Microwave, Refrigerator, Stove-Electric, Washer, Window Coverings
Heating	Fan Coil, Hot Water, Natural Gas
Fireplace	Yes
Fireplaces	Corner, Glass Door, Mantel
# of Stories	5
Stories	1
Has Basement	Yes
Basement	None, No Basement

Exterior

Exterior	Wood, Stone, Stucco
----------	---------------------

Exterior Features	Golf Nearby, Landscaped, Park/Reserve, Playground Nearby, Public Transportation, Recreation Use, Shopping Nearby, See Remarks
Roof	Asphalt Shingles
Construction	Wood, Stone, Stucco
Foundation	Concrete Perimeter

Additional Information

Date Listed	October 16th, 2024
Days on Market	148
Zoning	Zone 29
Condo Fee	\$617

DATA IS DEEMED RELIABLE BUT IS NOT GUARANTEED ACCURATE BY THE REALTORS® ASSOCIATION OF EDMONTON. COPYRIGHT 2025 BY THE REALTORS® ASSOCIATION OF EDMONTON. ALL RIGHTS RESERVED. Trademarks are owned or controlled by the Canadian Real Estate Association (CREA) and identify real estate professionals who are members of CREA (REALTOR®, REALTORS®) and/or the quality of services they provide (MLS®, Multiple Listing Service®)

Listing information last updated on March 12th, 2025 at 11:47pm MDT