

# \$547,900 - 166 Stonehouse Way, Leduc

MLS® #E4416858

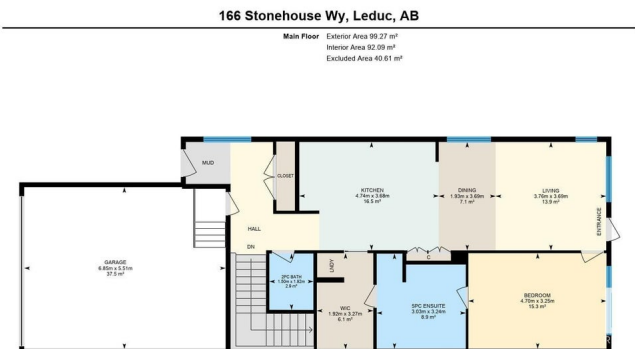
**\$547,900**

1 Bedroom, 1.50 Bathroom, 1,060 sqft  
Single Family on 0.00 Acres

Southfork, Leduc, AB

Jayman BUILT is offering an exciting opportunity to purchase a BUNGALOW style duplex with attached garage in a fantastic community with schools and parks close by! This model is the 'Parker' half duplex - NO CONDO FEES! Main floor is spacious and open; great room design with a dining area and the kitchen has quartz counter tops, stainless steel appliances, pantry and an island with flush eating bar. The owners suite is generous sized with a luxurious ensuite and walk-in closet with access to the laundry room. A covered veranda with glass railings gives comfortable out door living space. The basement development pricing and plans are available on request. With Jayman's Core performance features - solar panels, triple pane windows, tankless hot water system, high efficiency furnace & HRV and Smart Home technology, you'll love living here! A stunning home that offers great features!

Built in 2024



## Essential Information

MLS® #	E4416858
Price	\$547,900
Bedrooms	1
Bathrooms	1.50
Full Baths	1

Half Baths	1
Square Footage	1,060
Acres	0.00
Year Built	2024
Type	Single Family
Sub-Type	Half Duplex
Style	Bungalow
Status	Active

**Community Information**

Address	166 Stonehouse Way
Area	Leduc
Subdivision	Southfork
City	Leduc
County	ALBERTA
Province	AB
Postal Code	T9E 1R2

**Amenities**

Amenities	Ceiling 9 ft.
Parking	Double Garage Attached

**Interior**

Interior Features	ensuite bathroom
Appliances	Dishwasher-Built-In, Hood Fan, Oven-Microwave, Refrigerator, Stove-Electric
Heating	Forced Air-1, Natural Gas
Stories	1
Has Basement	Yes
Basement	Full, Unfinished

**Exterior**

Exterior	Wood, Vinyl
Exterior Features	Back Lane
Roof	Asphalt Shingles
Construction	Wood, Vinyl
Foundation	Concrete Perimeter

**Additional Information**

Date Listed January 2nd, 2025

Days on Market 176

Zoning Zone 81

DATA IS DEEMED RELIABLE BUT IS NOT GUARANTEED ACCURATE BY THE REALTORS® ASSOCIATION OF EDMONTON. COPYRIGHT 2025 BY THE REALTORS® ASSOCIATION OF EDMONTON. ALL RIGHTS RESERVED. Trademarks are owned or controlled by the Canadian Real Estate Association (CREA) and identify real estate professionals who are members of CREA (REALTOR®, REALTORS®) and/or the quality of services they provide (MLS®, Multiple Listing Service®)

Listing information last updated on June 27th, 2025 at 1:33pm MDT