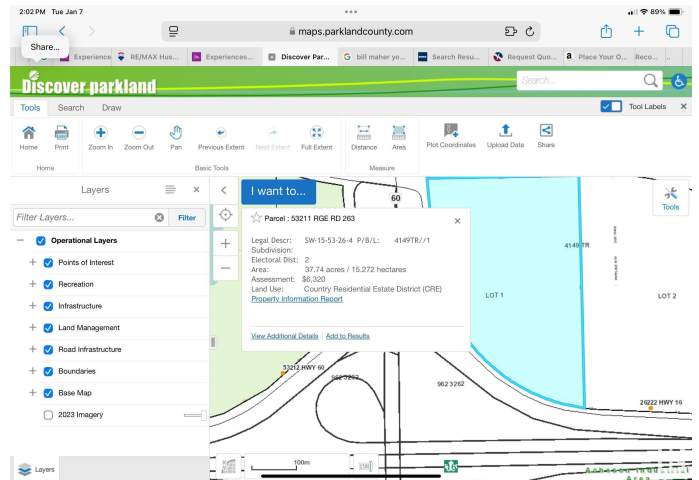


\$15,000,000

Acheson Business Park, Rural Parkland
County, AB

40 acres Highway Commercial for Sale. Seller may finance up to 75% of gross sale price to qualified buyer there is income from leasing the land



Essential Information


MLS® #	E4417639
Price	\$15,000,000
Bathrooms	0.00
Acres	0.00
Type	Land Commercial
Status	Active

Community Information


Address	53211 Rr263
Area	Rural Parkland County
Subdivision	Acheson Business Park
City	Rural Parkland County
County	ALBERTA
Province	AB
Postal Code	T7Z 1R1

Additional Information

Date Listed	January 8th, 2025
Days on Market	203
Zoning	Zone 70



Discover parkland



Property/Land Information

Location Details

MUNICIPAL ADDRESS: 53211 RGE RD 263

LEGAL ADDRESS: SW-15-53-26-4

LOT: 1

BLOCK:

PLAN: 4149TR

SUBDIVISION:

Zoning: Country Residential Estate District

Property/Land Details

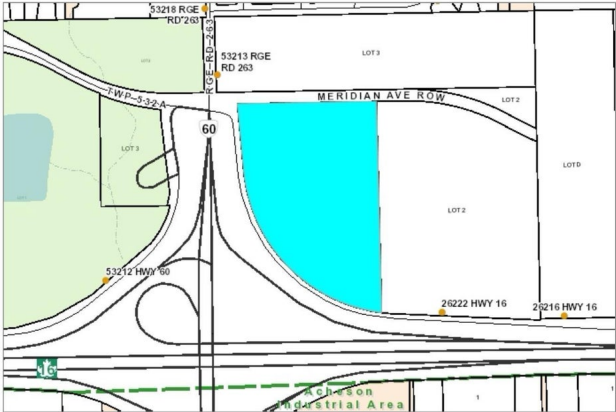
ACRES: 37.74

HECTARES: 15.272

ASSESSMENT: \$6,320

ASSESSMENT YEAR: 2023

ELECTORAL DIVISION: 2



While a great deal of effort has been made by Parkland County to ensure that our digital data is of the highest quality, it is of course possible that there are errors, omissions or inconsistencies. The data is continually being updated and enhanced. If a problem with the data is found, please help us correct the matter by sending a "Problem Report" to gissupport@parklandcounty.com

Report generated on: 11-09-2023

by Parkland County

DATA IS DEEMED RELIABLE BUT IS NOT GUARANTEED ACCURATE BY THE REALTORS® ASSOCIATION OF EDMONTON. COPYRIGHT 2025 BY THE REALTORS® ASSOCIATION OF EDMONTON. ALL RIGHTS RESERVED.Trademarks are owned or controlled by the Canadian Real Estate Association (CREA) and identify real estate professionals who are members of CREA (REALTOR®, REALTORS®) and/or the quality of services they provide (MLS®, Multiple Listing Service®)

Listing information last updated on July 30th, 2025 at 5:17pm MDT