

Courtesy Of Robert J Leishman Of RE/MAX Excellence

\$719,900 - 10444 131 Street, Edmonton

MLS® #E4417924

\$719,900

3 Bedroom, 2.00 Bathroom, 1,458 sqft
Single Family on 0.00 Acres

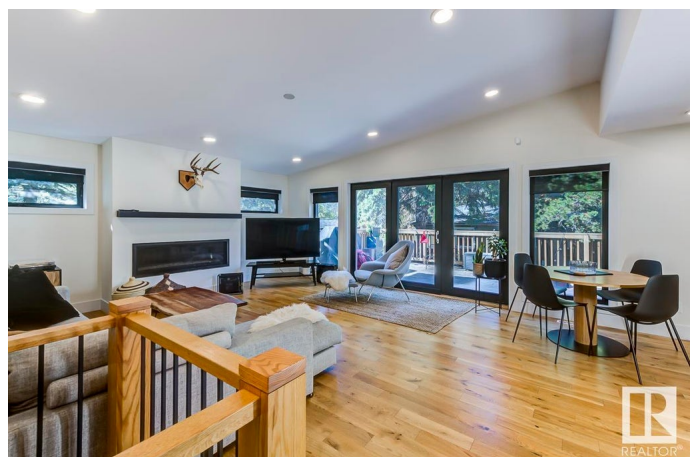
Glenora, Edmonton, AB

Don't miss out on this stunning gem in the heart of trendy Glenora! This 1458 sqft bungalow has been flawlessly RENOVATED to blend chic modern vibes w/ timeless charm. This home offers an open floor plan w/ sleek gourmet kitchen featuring contemporary cabinets, a large island w/ eating bar, & s/s appliances. The dining area flows effortlessly into the stylish living rm, where oversized windows flood the space w/ natural light, & a cozy gas fireplace adds warmth & flair. Featuring gorgeous engineered hardwood & the convenience of A/C, this home is designed for living. The spacious primary bdrm boasts a spa-like 5-pc ensuite, while the main flr includes a 2nd bdrm, office/3rd bdrm, & a 4-pc bath. The bsmt offers a large rec rm & laundry area. Outside, enjoy a private backyard oasis w/ mature trees, huge deck & a dbl detached garage. Ideally located near top schools, restaurants, shopping, & River Valley parks & trails. This home is Glenora living at its best! Don't miss out on this incredible opportunity!

Built in 1943

Essential Information

| | |
|--------|-----------|
| MLS® # | E4417924 |
| Price | \$719,900 |



| | |
|----------------|------------------------|
| Bedrooms | 3 |
| Bathrooms | 2.00 |
| Full Baths | 2 |
| Square Footage | 1,458 |
| Acres | 0.00 |
| Year Built | 1943 |
| Type | Single Family |
| Sub-Type | Detached Single Family |
| Style | Bungalow |
| Status | Active |

Community Information

| | |
|-------------|------------------|
| Address | 10444 131 Street |
| Area | Edmonton |
| Subdivision | Glenora |
| City | Edmonton |
| County | ALBERTA |
| Province | AB |
| Postal Code | T5N 1Y3 |

Amenities

| | |
|-----------|--|
| Amenities | Air Conditioner, Deck, No Smoking Home |
| Parking | Double Garage Detached |

Interior

| | |
|-------------------|---|
| Interior Features | ensuite bathroom |
| Appliances | Air Conditioning-Central, Dishwasher-Built-In, Dryer, Hood Fan, Refrigerator, Stove-Gas, Washer, Window Coverings |
| Heating | Forced Air-1, Natural Gas |
| Fireplace | Yes |
| Fireplaces | Mantel |
| Stories | 1 |
| Has Basement | Yes |
| Basement | Partial, Partially Finished |

Exterior

| | |
|-------------------|--|
| Exterior | Wood, Brick, Hardie Board Siding |
| Exterior Features | Back Lane, Fenced, Landscaped, No Through Road, Park/Reserve, Playground Nearby, Public Transportation, Schools, Shopping Nearby |

| | |
|--------------|----------------------------------|
| Roof | Asphalt Shingles |
| Construction | Wood, Brick, Hardie Board Siding |
| Foundation | Concrete Perimeter |

School Information

| | |
|------------|------------------------|
| Elementary | Glenora / St. Vincent |
| Middle | Westminster / St. Mark |
| High | Ross Sheppard |

Additional Information

| | |
|----------------|--------------------|
| Date Listed | January 13th, 2025 |
| Days on Market | 58 |
| Zoning | Zone 11 |

DATA IS DEEMED RELIABLE BUT IS NOT GUARANTEED ACCURATE BY THE REALTORS® ASSOCIATION OF EDMONTON. COPYRIGHT 2025 BY THE REALTORS® ASSOCIATION OF EDMONTON. ALL RIGHTS RESERVED. Trademarks are owned or controlled by the Canadian Real Estate Association (CREA) and identify real estate professionals who are members of CREA (REALTOR®, REALTORS®) and/or the quality of services they provide (MLS®, Multiple Listing Service®)

Listing information last updated on March 12th, 2025 at 2:47pm MDT