

Courtesy Of Mikela Blundon Of MaxWell Polaris

## \$214,900 - 206 5370 Chappelle Road, Edmonton

MLS® #E4418403

**\$214,900**

2 Bedroom, 2.00 Bathroom, 812 sqft  
Condo / Townhouse on 0.00 Acres

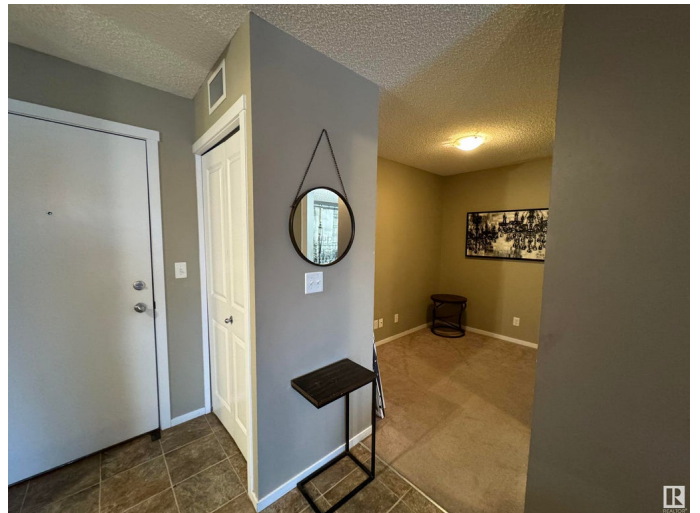
Chappelle Area, Edmonton, AB

CALLING ALL FIRST TIME BUYERS & INVESTORS! This charming 2 BEDROOM plus DEN condo offers a cozy open-concept living space that's perfect for both relaxation and entertaining. With LOW CONDO FEES and a modern layout, it's the perfect choice for easy living. The kitchen features sleek STAINLESS STEEL APPLIANCES, and the spacious den offers flexible space for a home office or cozy retreat. Enjoy 2 FULL BATHROOMS, IN-SUITE LAUNDRY and UNDERGROUND PARKING for added convenience. A large balcony extends the living space outdoors, perfect for enjoying fresh air or a morning coffee!

Built in 2016

### Essential Information

MLS® #	E4418403
Price	\$214,900
Bedrooms	2
Bathrooms	2.00
Full Baths	2
Square Footage	812
Acres	0.00
Year Built	2016
Type	Condo / Townhouse
Sub-Type	Lowrise Apartment



Style Single Level Apartment  
Status Active

### Community Information

Address 206 5370 Chappelle Road  
Area Edmonton  
Subdivision Chappelle Area  
City Edmonton  
County ALBERTA  
Province AB  
Postal Code T6W 3L5

### Amenities

Amenities Parking-Visitor, Patio, Secured Parking, Security Door, Sprinkler System-Fire  
Parking Spaces 1  
Parking Underground

### Interior

Interior Features ensuite bathroom  
Appliances Dishwasher-Built-In, Microwave Hood Fan, Refrigerator, Stacked Washer/Dryer, Stove-Electric, Window Coverings  
Heating Baseboard, Natural Gas  
# of Stories 4  
Stories 1  
Has Basement Yes  
Basement None, No Basement

### Exterior

Exterior Wood, Vinyl  
Exterior Features Airport Nearby, Flat Site, Landscaped, Public Transportation, Schools, Shopping Nearby  
Roof Unknown  
Construction Wood, Vinyl  
Foundation Concrete Perimeter

### Additional Information

Date Listed January 15th, 2025  
Days on Market 57  
Zoning Zone 55

HOA Fees	52.5
HOA Fees Freq.	Annually
Condo Fee	\$434

DATA IS DEEMED RELIABLE BUT IS NOT GUARANTEED ACCURATE BY THE REALTORS® ASSOCIATION OF EDMONTON. COPYRIGHT 2025 BY THE REALTORS® ASSOCIATION OF EDMONTON. ALL RIGHTS RESERVED. Trademarks are owned or controlled by the Canadian Real Estate Association (CREA) and identify real estate professionals who are members of CREA (REALTOR®, REALTORS®) and/or the quality of services they provide (MLS®, Multiple Listing Service®)

Listing information last updated on March 13th, 2025 at 7:32am MDT