

\$725,000 - 7280 May Road Nw, Edmonton

MLS® #E4419328

\$725,000

3 Bedroom, 3.00 Bathroom, 2,037 sqft
Single Family on 0.00 Acres

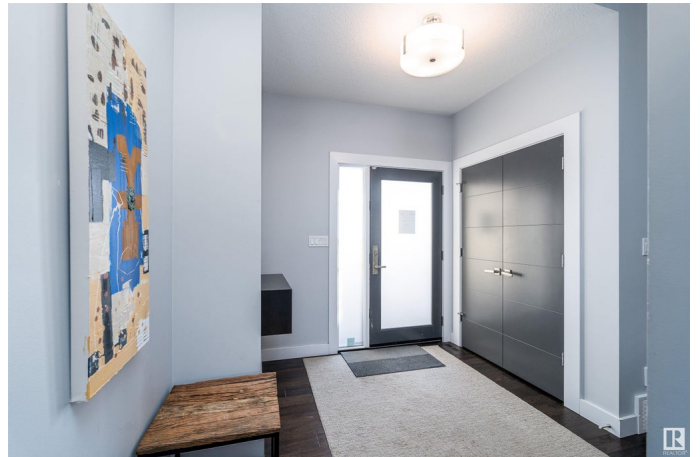
MacTaggart, Edmonton, AB

Nestled on a 12,402sq. ft. pie-shaped lot, this extraordinary Birkholz-built home is fully landscaped and fenced with a side-drive double garage with fully drywalled at size 28'x21', and long aggregate driveway. Come on inside and be taken with soaring 12-foot ceilings, a stunning central staircase, and high-end finishes throughout. Gourmet kitchen includes custom dark cabinetry, quartz countertops, a glass backsplash, gas range, and convenient walkthrough pantry. Upstairs, there are three large bedrooms, including the master suite complete with a walk-in closet featuring and a 5-piece spa ensuite. A second 4-piece bathroom and laundry room bring added convenience to the upper level. House perfectly set close to Nellie Carlson K-9 School, scenic parks, and ravine trails, with easy access to the Anthony Henday.

Built in 2011

Essential Information

| | |
|----------------|-----------|
| MLS® # | E4419328 |
| Price | \$725,000 |
| Bedrooms | 3 |
| Bathrooms | 3.00 |
| Full Baths | 3 |
| Square Footage | 2,037 |
| Acres | 0.00 |



| | |
|------------|------------------------|
| Year Built | 2011 |
| Type | Single Family |
| Sub-Type | Detached Single Family |
| Style | 2 Storey |
| Status | Active |

Community Information

| | |
|-------------|------------------|
| Address | 7280 May Road Nw |
| Area | Edmonton |
| Subdivision | MacTaggart |
| City | Edmonton |
| County | ALBERTA |
| Province | AB |
| Postal Code | T6R 0T2 |

Amenities

| | |
|-----------|------------------------|
| Amenities | See Remarks |
| Parking | Double Garage Attached |

Interior

| | |
|-------------------|--|
| Interior Features | ensuite bathroom |
| Appliances | Dishwasher-Portable, Dryer, Refrigerator, Stove-Gas, Washer, See Remarks |
| Heating | Forced Air-1, Natural Gas |
| Stories | 2 |
| Has Basement | Yes |
| Basement | Full, Unfinished |

Exterior

| | |
|-------------------|--------------------|
| Exterior | Wood, Stucco |
| Exterior Features | See Remarks |
| Roof | Asphalt Shingles |
| Construction | Wood, Stucco |
| Foundation | Concrete Perimeter |

Additional Information

| | |
|----------------|--------------------|
| Date Listed | January 27th, 2025 |
| Days on Market | 45 |
| Zoning | Zone 14 |

HOA Fees 200

HOA Fees Freq. Annually

DATA IS DEEMED RELIABLE BUT IS NOT GUARANTEED ACCURATE BY THE REALTORS® ASSOCIATION OF EDMONTON. COPYRIGHT 2025 BY THE REALTORS® ASSOCIATION OF EDMONTON. ALL RIGHTS RESERVED. Trademarks are owned or controlled by the Canadian Real Estate Association (CREA) and identify real estate professionals who are members of CREA (REALTOR®, REALTORS®) and/or the quality of services they provide (MLS®, Multiple Listing Service®)

Listing information last updated on March 13th, 2025 at 12:17am MDT