

\$1,875,000 - 26 Windermere Drive, Edmonton

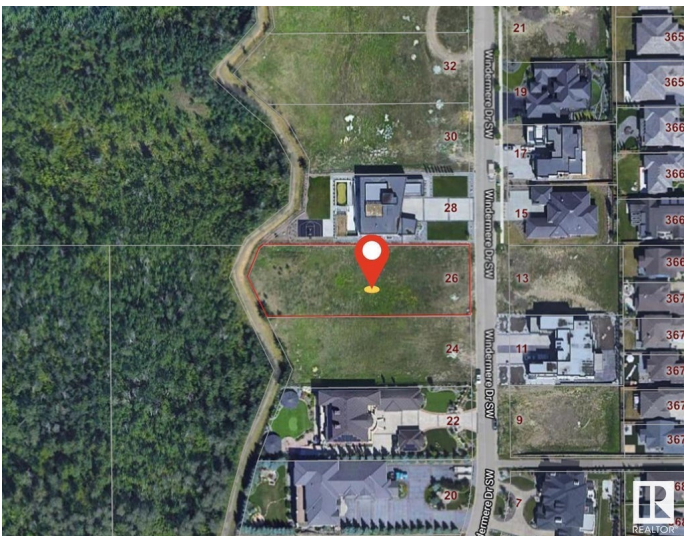
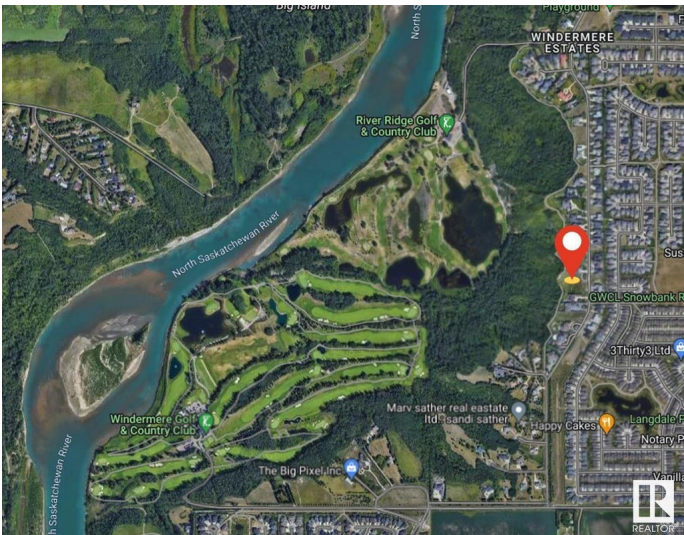
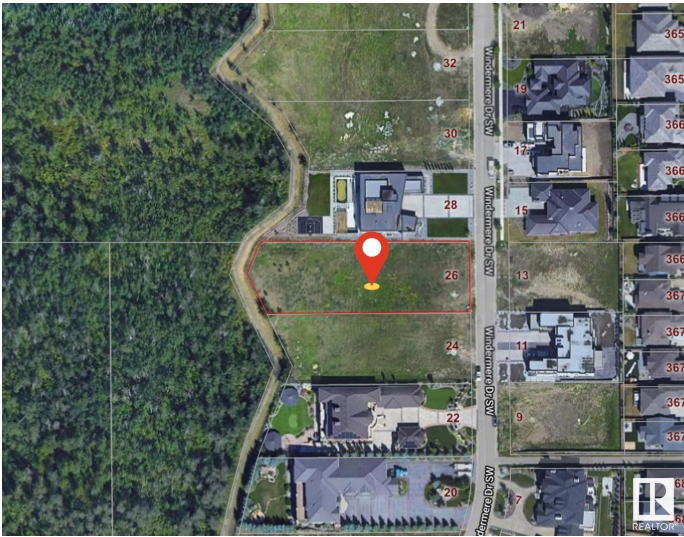
MLS® #E4420719

\$1,875,000

0 Bedroom, 0.00 Bathroom,
Single Family on 0.00 Acres

Windermere, Edmonton, AB

Prime 31,762 sq ft lot on esteemed Windermere Drive, offering a unique opportunity to craft your dream home. With a generous 101.4x298 size, this lot accommodates designs for a home with an 82-FOOT POCKET. Nestled in a location that balances seclusion with easy access to Windermere's amenities, it's perfect for various architectural styles including a 2-storey, 3-storey, 1½-story, or Raised bungalow. The site offers a rare view, OVERLOOKING 2 GOLF COURSES AND RIVER VISTAS, enhanced by a BACKING PRIVATE WALKWAY. READY FOR IMMEDIATE DEVELOPMENT, this exceptional plot awaits your vision. Select your preferred builder and start creating the home you've always envisioned on this unparalleled lot. AMAZING PRIME LOCATION!



Essential Information

MLS® #	E4420719
Price	\$1,875,000
Bathrooms	0.00
Acres	0.00
Type	Single Family
Sub-Type	Vacant Lot/Land
Status	Active

Community Information

Address	26 Windermere Drive
Area	Edmonton
Subdivision	Windermere
City	Edmonton
County	ALBERTA
Province	AB
Postal Code	T6W 0C2

Exterior

Exterior Features	Cul-De-Sac, Environmental Reserve, Flat Site, Golf Nearby, Park/Reserve, River View, Schools, Shopping Nearby, Ski Hill Nearby, See Remarks, Partially Fenced
-------------------	---

School Information

Elementary	A.Blair McPherson School
Middle	Alex Janvier School
High	Academy at King Edward

Additional Information

Date Listed	February 7th, 2025
Days on Market	121
Zoning	Zone 56

DATA IS DEEMED RELIABLE BUT IS NOT GUARANTEED ACCURATE BY THE REALTORS® ASSOCIATION OF EDMONTON. COPYRIGHT 2025 BY THE REALTORS® ASSOCIATION OF EDMONTON. ALL RIGHTS RESERVED.Trademarks are owned or controlled by the Canadian Real Estate Association (CREA) and identify real estate professionals who are members of CREA (REALTOR®, REALTORS®) and/or the quality of services they provide (MLS®, Multiple Listing Service®)

Listing information last updated on June 8th, 2025 at 3:17am MDT