

# \$90,000 - 203 11308 108 Avenue, Edmonton

MLS® #E4420799

**\$90,000**

1 Bedroom, 1.00 Bathroom, 671 sqft  
Condo / Townhouse on 0.00 Acres

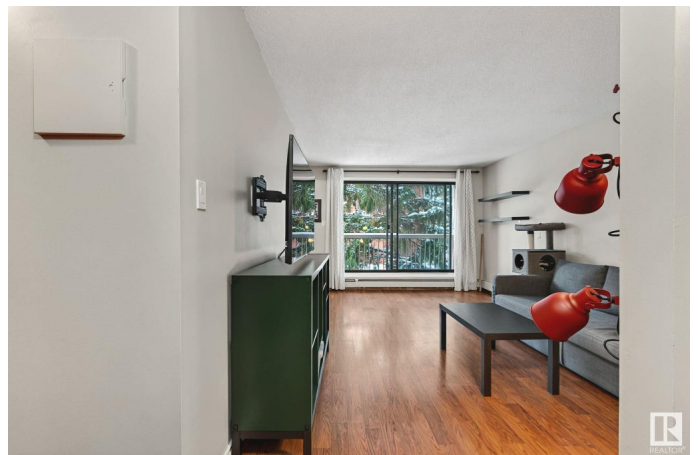
Queen Mary Park, Edmonton, AB

Discover this functional and spacious 670 Sq Ft 1-bedroom, 1-bathroom condo, perfect for first-time buyers or a smart investment opportunity located in the heart of Queen Mary Park. Featuring a refreshed kitchen, completed with stainless steel appliances, ample storage throughout, & your own private balcony, this unit is designed for both comfort and convenience. Located just minutes from Edmonton's vibrant Brewery District, you'll have easy access to trendy restaurants, shopping, and entertainment. Enjoy the added perks of an assigned parking stall and access to a common-area laundry room.

Built in 1979

## Essential Information

MLS® #	E4420799
Price	\$90,000
Bedrooms	1
Bathrooms	1.00
Full Baths	1
Square Footage	671
Acres	0.00
Year Built	1979
Type	Condo / Townhouse
Sub-Type	Lowrise Apartment



Style Single Level Apartment  
Status Active

### Community Information

Address 203 11308 108 Avenue  
Area Edmonton  
Subdivision Queen Mary Park  
City Edmonton  
County ALBERTA  
Province AB  
Postal Code T5H 1B6

### Amenities

Amenities On Street Parking, No Smoking Home, Parking-Plug-Ins, Parking-Visitor, See Remarks  
Parking Stall

### Interior

Appliances Refrigerator, Stove-Electric, Window Coverings  
Heating Hot Water, Natural Gas  
# of Stories 3  
Stories 1  
Has Basement Yes  
Basement None, No Basement

### Exterior

Exterior Wood, Stucco  
Exterior Features Back Lane, Golf Nearby, Playground Nearby, Public Transportation, Schools, Shopping Nearby, See Remarks  
Roof Tar & Gravel  
Construction Wood, Stucco  
Foundation Concrete Perimeter

### School Information

Elementary John A. McDougall School  
Middle Spruce Avenue School  
High Victoria School

### Additional Information

Date Listed February 7th, 2025

Days on Market	33
Zoning	Zone 08
Condo Fee	\$398

DATA IS DEEMED RELIABLE BUT IS NOT GUARANTEED ACCURATE BY THE REALTORS® ASSOCIATION OF EDMONTON. COPYRIGHT 2025 BY THE REALTORS® ASSOCIATION OF EDMONTON. ALL RIGHTS RESERVED. Trademarks are owned or controlled by the Canadian Real Estate Association (CREA) and identify real estate professionals who are members of CREA (REALTOR®, REALTORS®) and/or the quality of services they provide (MLS®, Multiple Listing Service®)

Listing information last updated on March 12th, 2025 at 5:47pm MDT