

\$389,900 - 5211 101a Avenue, Edmonton

MLS® #E4421045

\$389,900

0 Bedroom, 0.00 Bathroom,
Land Commercial on 0.00 Acres

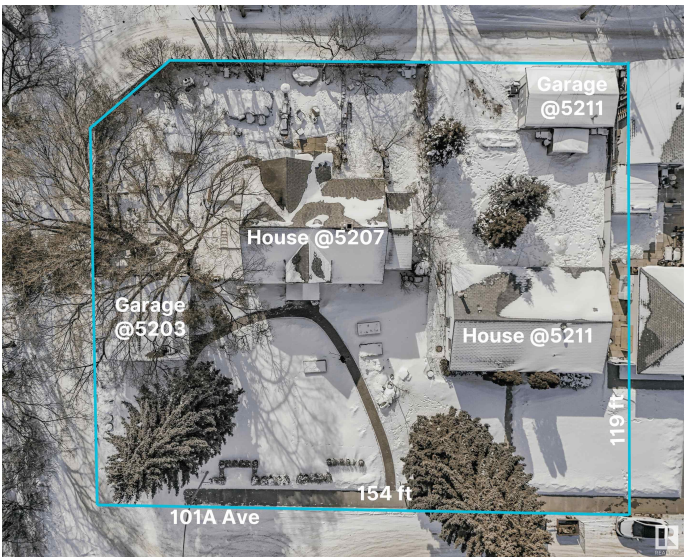
Fulton Place, Edmonton, AB

INVESTORS & BUILDERS! Incredible development opportunity in Fulton Place! A rare 4 adjacent lots totaling 1683 SQM, zoned RS (Small Scale Residential) perfect for multi-residential, dream homes, duplexes, townhouses, basement suites, garage/garden suites, or a multi-family infill. Two existing bungalows with garages and month-to-month renters offer immediate cash flow while you plan your project. Ideally located minutes from downtown, within walking distance to Capilano Mall, and close to Gold Bar Park, river valley trails, Rundle Park, and Hardisty Fitness Centre. Top schools like Hardisty, McEwan, and Kingâ€™s College add to its appeal. A prime opportunity in a thriving, well-connected community. Donâ€™t miss your chance to invest in Fulton Place! To be sold with adjacent lots at 5203-5209 101A Ave for \$1,325,000.

Built in 1956

Essential Information

| | |
|------------|-----------------|
| MLS® # | E4421045 |
| Price | \$389,900 |
| Bathrooms | 0.00 |
| Acres | 0.00 |
| Year Built | 1956 |
| Type | Land Commercial |



Status Active

Community Information

Address 5211 101a Avenue
Area Edmonton
Subdivision Fulton Place
City Edmonton
County ALBERTA
Province AB
Postal Code T6A 0L7

Additional Information

Date Listed February 3rd, 2025
Days on Market 140
Zoning Zone 19

DATA IS DEEMED RELIABLE BUT IS NOT GUARANTEED ACCURATE BY THE REALTORS® ASSOCIATION OF EDMONTON. COPYRIGHT 2025 BY THE REALTORS® ASSOCIATION OF EDMONTON. ALL RIGHTS RESERVED.Trademarks are owned or controlled by the Canadian Real Estate Association (CREA) and identify real estate professionals who are members of CREA (REALTOR®, REALTORS®) and/or the quality of services they provide (MLS®, Multiple Listing Service®)
Listing information last updated on June 22nd, 2025 at 10:32pm MDT