

\$1,199,900 - 41 Laderoute Place, St. Albert

MLS® #E4422279

\$1,199,900

4 Bedroom, 3.50 Bathroom, 2,449 sqft
Single Family on 0.00 Acres

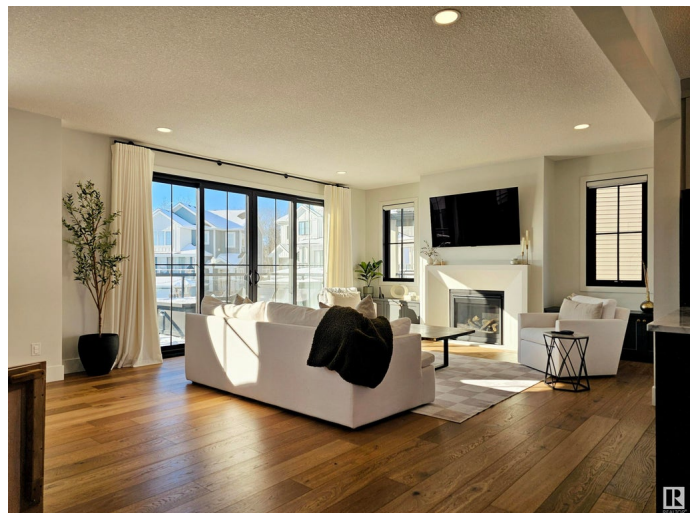
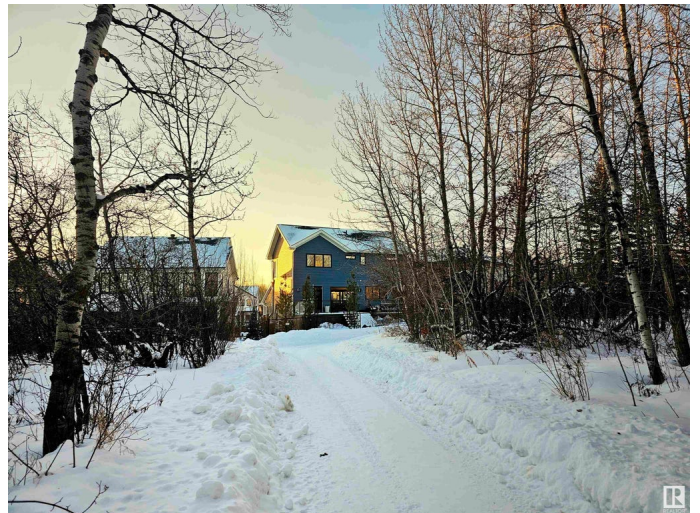
Lacombe Park, St. Albert, AB

Modern luxury meets serene natural surroundings in this sweeping Sarasota CUSTOM BUILT 4 bedroom/bathroom two-story estate (w/ HEATED TRIPLE GARAGE) settled on quiet cul-de-sac and BACKING TREES. Clean lines, expansive west facing windows, maple hardwood flooring, & crisp neutral paint tones accentuate the spacious floor plan boasting over 3,328+ sq ft of living space. Designer kitchen features dual tone custom cabinetry, upgraded s/s appliances, walk-in pantry (and BUTLER PANTRY, honed quartz countertops, and large central island overlooking sun-swept dining space. Glass sliders reveal large patio and PROFESSIONALLY LANDSCAPED oasis overlooking walking path & trees. Upstairs reveals laundry suite, 4 pc bathroom, and 3 VAULTED bedrooms (each w/ walk-in closets) including generous primary w/ spa-like 5 pc ensuite, dressing room, and direct access to laundry. BSMT is FF and includes family room, 3 pc bath, wet bar, 4th bedroom, and mudroom w/ access to garage. DREAM LOCATION mere steps from Lacombe PARK.

Built in 2019

Essential Information

MLS® #	E4422279
Price	\$1,199,900



Bedrooms	4
Bathrooms	3.50
Full Baths	3
Half Baths	1
Square Footage	2,449
Acres	0.00
Year Built	2019
Type	Single Family
Sub-Type	Detached Single Family
Style	2 Storey
Status	Active

Community Information

Address	41 Laderoute Place
Area	St. Albert
Subdivision	Lacombe Park
City	St. Albert
County	ALBERTA
Province	AB
Postal Code	T8N 7H9

Amenities

Amenities	Air Conditioner, Deck, Fire Pit, Vaulted Ceiling, Wet Bar
Parking Spaces	6
Parking	Over Sized, Triple Garage Attached

Interior

Interior Features	ensuite bathroom
Appliances	Air Conditioning-Central, Dishwasher-Built-In, Dryer, Garage Opener, Hood Fan, Refrigerator, Stove-Gas, Washer, Window Coverings, Wine/Beverage Cooler, Garage Heater
Heating	Forced Air-1, Natural Gas
Fireplace	Yes
Fireplaces	Mantel
Stories	3
Has Basement	Yes
Basement	Full, Finished

Exterior

Exterior	Wood, Brick, Hardie Board Siding
Exterior Features	Backs Onto Park/Trees, Cul-De-Sac, Fruit Trees/Shrubs, Landscaped, Level Land, Private Setting, Public Transportation, Schools, Shopping Nearby
Roof	Asphalt Shingles
Construction	Wood, Brick, Hardie Board Siding
Foundation	Concrete Perimeter

Additional Information

Date Listed February 20th, 2025

Days on Market 20

Zoning Zone 24

DATA IS DEEMED RELIABLE BUT IS NOT GUARANTEED ACCURATE BY THE REALTORS® ASSOCIATION OF EDMONTON. COPYRIGHT 2025 BY THE REALTORS® ASSOCIATION OF EDMONTON. ALL RIGHTS RESERVED. Trademarks are owned or controlled by the Canadian Real Estate Association (CREA) and identify real estate professionals who are members of CREA (REALTOR®, REALTORS®) and/or the quality of services they provide (MLS®, Multiple Listing Service®)

Listing information last updated on March 12th, 2025 at 8:02pm MDT