

Courtesy Of Manny Fuller and Max Segal Of Real Broker

\$284,900 - 1401 9921 104 Street, Edmonton

MLS® #E4423015

\$284,900

2 Bedroom, 2.00 Bathroom, 1,415 sqft
Condo / Townhouse on 0.00 Acres

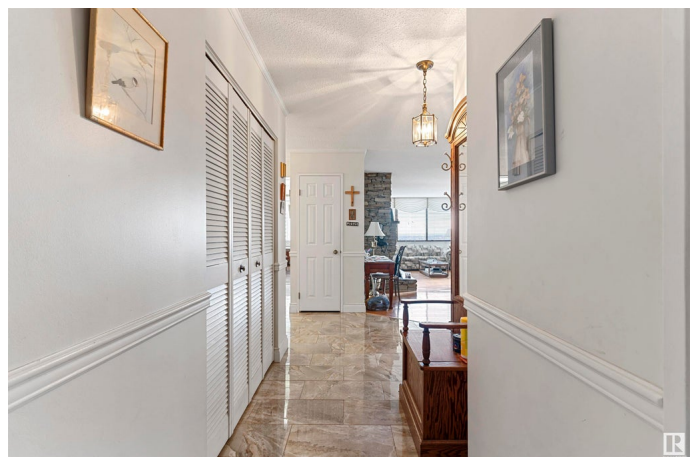
Downtown (Edmonton), Edmonton, AB

Welcome to urban living at its finest in this spacious two-bedroom, two-bathroom apartment on the 14th floor, right in the heart of downtown Edmonton! Well-maintained and featuring breathtaking views of the River Valley and the iconic Muttart Conservatory, this unit offers a perfect blend of comfort and style. The primary bedroom includes a three-piece en suite, and both bedrooms provide generous space for relaxation. Cozy up by the beautiful wood-burning fireplace in the living room, or entertain guests in the large formal dining area. The unit also boasts in-suite laundry and ample storage space for your convenience. Located just steps from the River Valley, the LRT, and close to all downtown amenities, this is a prime spot to experience everything Edmonton has to offer. Experience the best of downtown living in one of Edmonton's most desirable locations!

Built in 1977

Essential Information

MLS® #	E4423015
Price	\$284,900
Bedrooms	2
Bathrooms	2.00
Full Baths	2
Square Footage	1,415



Acres	0.00
Year Built	1977
Type	Condo / Townhouse
Sub-Type	Apartment High Rise
Style	Single Level Apartment
Status	Active

Community Information

Address	1401 9921 104 Street
Area	Edmonton
Subdivision	Downtown (Edmonton)
City	Edmonton
County	ALBERTA
Province	AB
Postal Code	T5K 2K3

Amenities

Amenities	Detectors Smoke, Exercise Room, Parking-Visitor, Party Room, Patio, Recreation Room/Centre, Secured Parking, Security Door, Social Rooms, Storage-In-Suite, Vacuum System-Roughed-In
Parking	Parkade, Underground

Interior

Interior Features	ensuite bathroom
Appliances	Dryer, Microwave Hood Fan, Refrigerator, Stove-Electric, Washer, Window Coverings
Heating	Hot Water, Natural Gas
Fireplace	Yes
Fireplaces	Stone Facing
# of Stories	15
Stories	1
Has Basement	Yes
Basement	None, No Basement

Exterior

Exterior	Concrete
Exterior Features	Paved Lane, Public Transportation, River Valley View, Schools, Shopping Nearby, Ski Hill Nearby, View City
Roof	Tar & Gravel

Construction	Concrete
Foundation	Concrete Perimeter

School Information

Elementary	GARNEAU SCHOOL
Middle	ALLENDALE SCHOOL
High	VICTORIA SCHOOL

Additional Information

Date Listed	February 26th, 2025
Days on Market	16
Zoning	Zone 12
Condo Fee	\$974

DATA IS DEEMED RELIABLE BUT IS NOT GUARANTEED ACCURATE BY THE REALTORS® ASSOCIATION OF EDMONTON. COPYRIGHT 2025 BY THE REALTORS® ASSOCIATION OF EDMONTON. ALL RIGHTS RESERVED. Trademarks are owned or controlled by the Canadian Real Estate Association (CREA) and identify real estate professionals who are members of CREA (REALTOR®, REALTORS®) and/or the quality of services they provide (MLS®, Multiple Listing Service®)

Listing information last updated on March 14th, 2025 at 4:47pm MDT