

Courtesy Of Erin Holowach Of ComFree

\$1,295,000 - 10610 138 Street, Edmonton

MLS® #E4423255

\$1,295,000

4 Bedroom, 4.00 Bathroom, 2,829 sqft
Single Family on 0.00 Acres

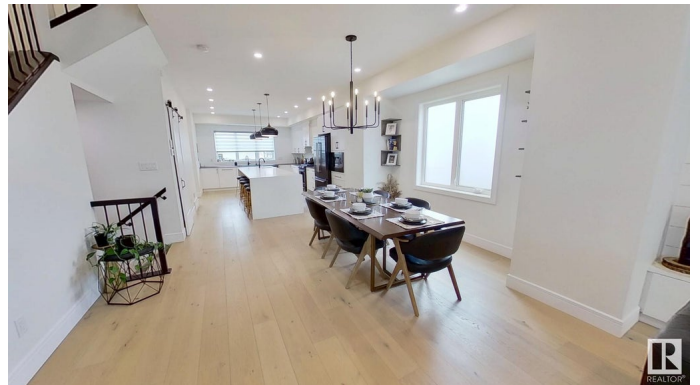
Glenora, Edmonton, AB

Stunning Home in Prestigious Glenora
Welcome to this breathtaking 3-story infill home, offering 3,559 sq. ft. of meticulously designed living space in the heart of Glenora—“one of the most sought-after neighborhoods in the city. Built in 2020 by renowned NorthPointe Homes, this custom masterpiece blends modern elegance with superior craftsmanship. Key Features: 3-Story Design — Spacious and functional layout Double Heated Garage — Perfect for winter months Premium Finishes — High-end materials & luxury touches throughout Custom cabinetry, quartz countertops, and black stainless appliances Prime Location — Quick and easy access to downtown Located in quieter street, minutes from downtown, top schools, and river valley trails. A rare opportunity to own a charming home in a historic, upscale community!

Built in 2020

Essential Information

MLS® #	E4423255
Price	\$1,295,000
Bedrooms	4
Bathrooms	4.00
Full Baths	3
Half Baths	2



Square Footage	2,829
Acres	0.00
Year Built	2020
Type	Single Family
Sub-Type	Detached Single Family
Style	3 Storey
Status	Active

Community Information

Address	10610 138 Street
Area	Edmonton
Subdivision	Glenora
City	Edmonton
County	ALBERTA
Province	AB
Postal Code	T5N 2J8

Amenities

Amenities	Air Conditioner, Carbon Monoxide Detectors, Ceiling 9 ft., Closet Organizers, Deck, Detectors Smoke, Hot Water Electric, No Animal Home, No Smoking Home, Patio, Vinyl Windows
Parking	Double Garage Detached

Interior

Interior Features	ensuite bathroom
Appliances	Air Conditioning-Central, Alarm/Security System, Dishwasher-Built-In, Dryer, Garage Control, Garage Opener, Garburator, Hood Fan, Oven-Microwave, Refrigerator, Stove-Gas, Vacuum Systems, Washer
Heating	Forced Air-1, Natural Gas
Fireplace	Yes
Fireplaces	Wall Mount
Stories	4
Has Basement	Yes
Basement	Full, Finished

Exterior

Exterior	Wood, Asphalt, Brick, Vinyl
Exterior Features	Back Lane, Fenced, Flat Site, Golf Nearby, Landscaped, Level Land, Paved Lane, Playground Nearby, Public Transportation, Schools, Shopping Nearby

Lot Description	8.53 X 42.79
Roof	Asphalt Shingles
Construction	Wood, Asphalt, Brick, Vinyl
Foundation	Concrete Perimeter

Additional Information

Date Listed	February 28th, 2025
Days on Market	12
Zoning	Zone 11

DATA IS DEEMED RELIABLE BUT IS NOT GUARANTEED ACCURATE BY THE REALTORS® ASSOCIATION OF EDMONTON. COPYRIGHT 2025 BY THE REALTORS® ASSOCIATION OF EDMONTON. ALL RIGHTS RESERVED. Trademarks are owned or controlled by the Canadian Real Estate Association (CREA) and identify real estate professionals who are members of CREA (REALTOR®, REALTORS®) and/or the quality of services they provide (MLS®, Multiple Listing Service®)

Listing information last updated on March 12th, 2025 at 7:32pm MDT