

\$928,888 - 3439 West Landing Landing, Edmonton

MLS® #E4423263

\$928,888

5 Bedroom, 4.00 Bathroom, 3,117 sqft
Single Family on 0.00 Acres

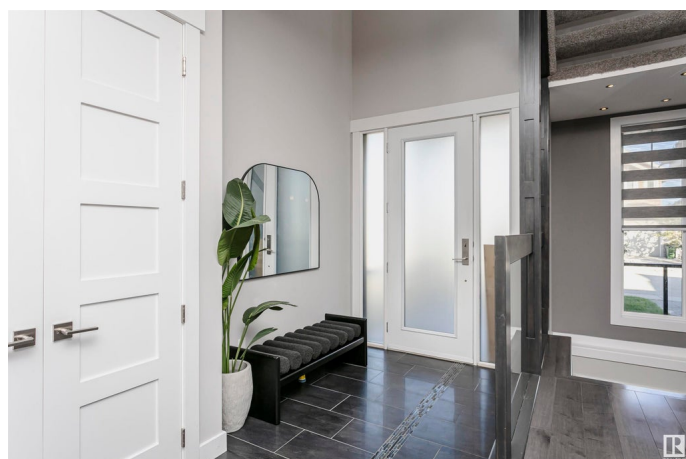
Windermere, Edmonton, AB

Welcome Home! This stunning 5-bedroom, 4-bath Executive two-story home features an inviting open layout. Step through the front door into a spacious kitchen and a living room highlighted by a beautiful tiled fireplace. The main level also includes a large dining room, a bedroom, a 3-piece bathroom, and a well-sized mudroom with pantry access from the double attached garage. Upstairs, enjoy a generous family room (bonus room) and an impressive primary suite with a 5-piece ensuite and a large walk-in closet. Two additional bedrooms, each with walk-in closets, share a stylish 4-piece bathroom, along with a convenient laundry room. The basement is an ideal retreat, featuring a gym, a large recreation room with a bar, a 4-piece bathroom, and a spacious bedroom with a walk-in closet. This home seamlessly blends luxury and functionality in one of Edmonton's most desirable neighbourhoods.

Built in 2012

Essential Information

MLS® #	E4423263
Price	\$928,888
Bedrooms	5
Bathrooms	4.00
Full Baths	4



Square Footage	3,117
Acres	0.00
Year Built	2012
Type	Single Family
Sub-Type	Detached Single Family
Style	2 Storey
Status	Active

Community Information

Address	3439 West Landing Landing
Area	Edmonton
Subdivision	Windermere
City	Edmonton
County	ALBERTA
Province	AB
Postal Code	T6W 0T4

Amenities

Amenities	Air Conditioner, Bar, Closet Organizers, Deck, Detectors Smoke, Exercise Room
Parking	Double Garage Attached

Interior

Interior Features	ensuite bathroom
Appliances	Air Conditioning-Central, Dishwasher-Built-In, Dryer, Garage Control, Garage Opener, Hood Fan, Oven-Built-In, Oven-Microwave, Refrigerator, Stove-Countertop Gas, Washer, Window Coverings
Heating	Forced Air-1, Natural Gas
Fireplace	Yes
Fireplaces	Tile Surround
Stories	3
Has Basement	Yes
Basement	Full, Finished

Exterior

Exterior	Wood, Stone, Stucco
Exterior Features	Fenced, Golf Nearby, Landscaped, Schools, Shopping Nearby, See Remarks
Roof	Asphalt Shingles

Construction	Wood, Stone, Stucco
Foundation	Concrete Perimeter

School Information

Elementary	Constable Daniel Woodall
Middle	Riverbend School
High	Lillian(Lottery Process)

Additional Information

Date Listed	February 28th, 2025
Days on Market	12
Zoning	Zone 56
HOA Fees	160
HOA Fees Freq.	Annually

DATA IS DEEMED RELIABLE BUT IS NOT GUARANTEED ACCURATE BY THE REALTORS® ASSOCIATION OF EDMONTON. COPYRIGHT 2025 BY THE REALTORS® ASSOCIATION OF EDMONTON. ALL RIGHTS RESERVED. Trademarks are owned or controlled by the Canadian Real Estate Association (CREA) and identify real estate professionals who are members of CREA (REALTOR®, REALTORS®) and/or the quality of services they provide (MLS®, Multiple Listing Service®)

Listing information last updated on March 12th, 2025 at 4:02pm MDT