

Courtesy Of Chang Liu Of Century 21 Masters

\$986,000 - 11232 48 Avenue, Edmonton

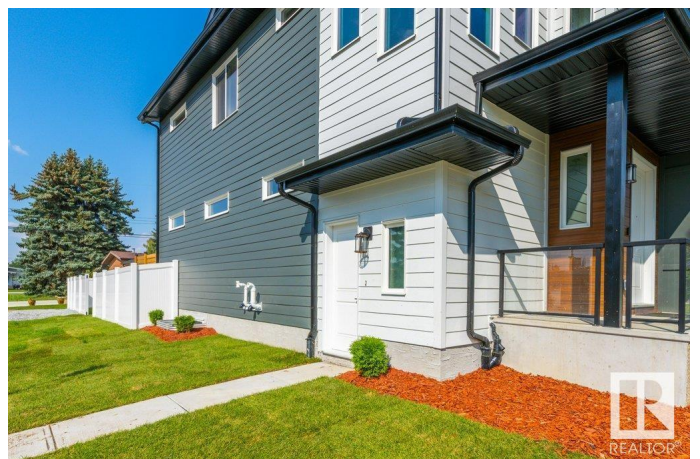
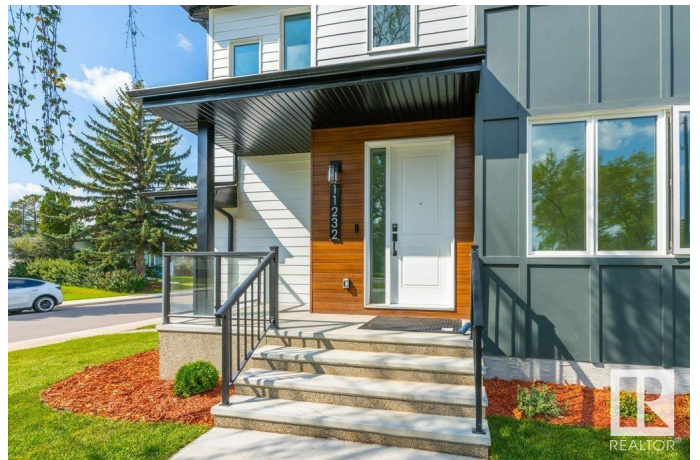
MLS® #E4423452

\$986,000

8 Bedroom, 4.00 Bathroom, 2,271 sqft
Single Family on 0.00 Acres

Malmo Plains, Edmonton, AB

STUNNING CUSTOM BUILT INFILL HOME FACING PARK! OVER 3,016 SQFT OF LUXURIOUS LIVING SPACE in the highly sought-after Malmo Plains! Features 8 Bedrooms & 4 full Baths, an open concept floor plan, 9 ft ceilings throughout, developed basement w/ seperate entrance, and oversized double garage! SPACIOUS main floor w/ lots Natural light, large windows, Chef inspired Kitchen, custom cabinetry, soft close drawers, quartz island, and S/S appliances! Rear mud room all w/ custom built in shelving, big dining & living room, featuring a linear fireplace. Upstairs boasts 3 spacious bedrooms and HUGE Master suite w/ a large walk-in closet and 5 pcs ensuite bath, mini bonus room and laundry room! FINISHED BASEMENT with 3 bedrooms, 1 full bath, and wetbar! Basement is easily convertible to suit your needs, gym/playroom/studio/space for HOME-BASED BUSINESS. Top designated schools: Lendrum, Avalon, and Harry Ainlay! Steps to Southgate Mall! Upgraded exteriors with James Hardie throughout. Quick possession & Fully Landscaped!



Built in 2023

Essential Information

MLS® #	E4423452
Price	\$986,000

Bedrooms	8
Bathrooms	4.00
Full Baths	4
Square Footage	2,271
Acres	0.00
Year Built	2023
Type	Single Family
Sub-Type	Detached Single Family
Style	2 Storey
Status	Active

Community Information

Address	11232 48 Avenue
Area	Edmonton
Subdivision	Malmo Plains
City	Edmonton
County	ALBERTA
Province	AB
Postal Code	T6H 0C8

Amenities

Amenities	Ceiling 9 ft., Deck, Detectors Smoke, Front Porch, Insulation-Upgraded, Infill Property, HRV System
Parking Spaces	4
Parking	Double Garage Detached

Interior

Interior Features	ensuite bathroom
Appliances	Dishwasher-Built-In, Dryer, Garage Opener, Hood Fan, Oven-Microwave, Refrigerator, Stove-Gas, Washer, Window Coverings
Heating	Forced Air-1, Natural Gas
Fireplace	Yes
Fireplaces	Tile Surround
Stories	3
Has Basement	Yes
Basement	Full, Finished

Exterior

Exterior	Wood, Metal, Hardie Board Siding
----------	----------------------------------

Exterior Features	Playground Nearby, Public Transportation, Recreation Use, Schools, Shopping Nearby
Roof	Asphalt Shingles
Construction	Wood, Metal, Hardie Board Siding
Foundation	Concrete Perimeter

School Information

Elementary	Lendrum School
Middle	Avalon School
High	Harry Ainlay School

Additional Information

Date Listed	February 28th, 2025
Days on Market	12
Zoning	Zone 15

DATA IS DEEMED RELIABLE BUT IS NOT GUARANTEED ACCURATE BY THE REALTORS® ASSOCIATION OF EDMONTON. COPYRIGHT 2025 BY THE REALTORS® ASSOCIATION OF EDMONTON. ALL RIGHTS RESERVED. Trademarks are owned or controlled by the Canadian Real Estate Association (CREA) and identify real estate professionals who are members of CREA (REALTOR®, REALTORS®) and/or the quality of services they provide (MLS®, Multiple Listing Service®)

Listing information last updated on March 12th, 2025 at 2:02pm MDT