

Courtesy Of Mark Drebert Of 2% Realty Pro

\$159,900 - 205 5521 7 Avenue, Edmonton

MLS® #E4423557

\$159,900

1 Bedroom, 1.00 Bathroom, 554 sqft
Condo / Townhouse on 0.00 Acres

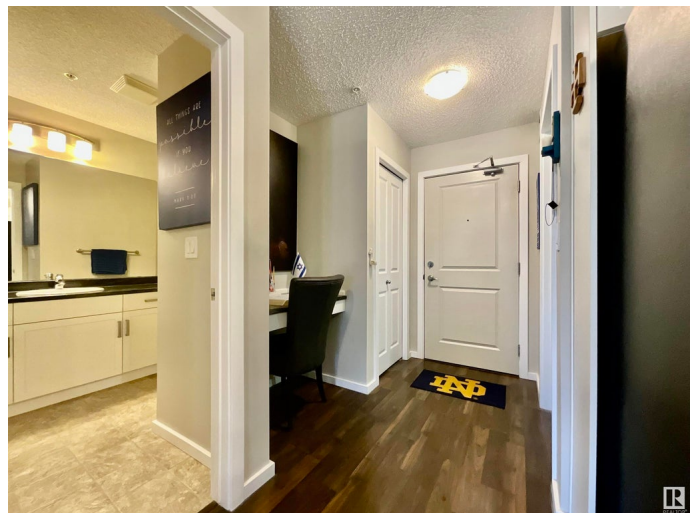
Charlesworth, Edmonton, AB

Welcome home to this bright, clean and cozy apartment in the beautiful and growing neighbourhood of Charlesworth. This 1 bed, 1 bath unit contains in-suite laundry, a large walk-through closet, plenty of storage space, and is only walking distance from shopping, restaurants, parks, and playgrounds. Located close to public transportation, quick access to the Anthony Henday, and a short drive to the Airport. Take advantage of the balcony for a BBQ, or to sip a coffee and read a book on a quiet, sunny morning. Couples will love the convenience of having two parking stalls; one heated underground, and one energized above ground. Affordable, clean, and convenient; units like this are rare.

Built in 2014

Essential Information

MLS® #	E4423557
Price	\$159,900
Bedrooms	1
Bathrooms	1.00
Full Baths	1
Square Footage	554
Acres	0.00
Year Built	2014
Type	Condo / Townhouse



Sub-Type	Lowrise Apartment
Style	Single Level Apartment
Status	Active

Community Information

Address	205 5521 7 Avenue
Area	Edmonton
Subdivision	Charlesworth
City	Edmonton
County	ALBERTA
Province	AB
Postal Code	T5M 1Y9

Amenities

Amenities	Detectors Smoke, Parking-Extra, Parking-Plug-Ins, Parking-Visitor, Security Door
Parking	Stall, Underground

Interior

Interior Features	ensuite bathroom
Appliances	Dishwasher-Built-In, Dryer, Refrigerator, Stove-Electric, Washer
Heating	Baseboard, Hot Water, Natural Gas
# of Stories	4
Stories	1
Has Basement	Yes
Basement	None, No Basement

Exterior

Exterior	Wood, Stone, Vinyl
Exterior Features	Airport Nearby, Landscaped, Playground Nearby, Schools, Shopping Nearby
Roof	Asphalt Shingles
Construction	Wood, Stone, Vinyl
Foundation	Concrete Perimeter

Additional Information

Date Listed	March 1st, 2025
Days on Market	12
Zoning	Zone 53

Condo Fee \$379

DATA IS DEEMED RELIABLE BUT IS NOT GUARANTEED ACCURATE BY THE REALTORS® ASSOCIATION OF EDMONTON. COPYRIGHT 2025 BY THE REALTORS® ASSOCIATION OF EDMONTON. ALL RIGHTS RESERVED. Trademarks are owned or controlled by the Canadian Real Estate Association (CREA) and identify real estate professionals who are members of CREA (REALTOR®, REALTORS®) and/or the quality of services they provide (MLS®, Multiple Listing Service®)

Listing information last updated on March 13th, 2025 at 5:17am MDT