

\$99,000 - 405 10434 125 Street, Edmonton

MLS® #E4423909

\$99,000

1 Bedroom, 1.00 Bathroom, 635 sqft
Condo / Townhouse on 0.00 Acres

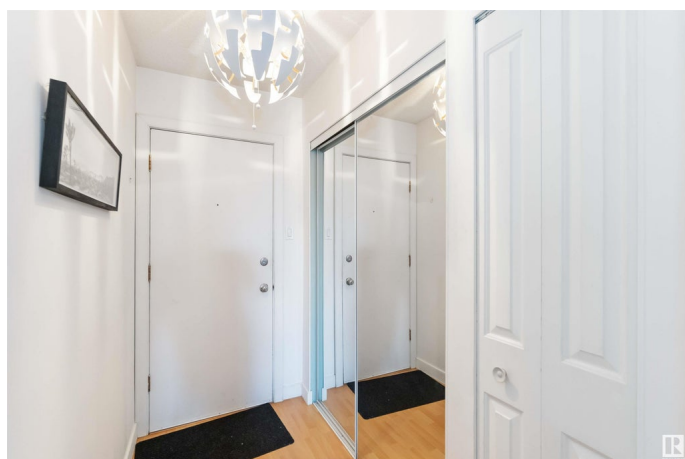
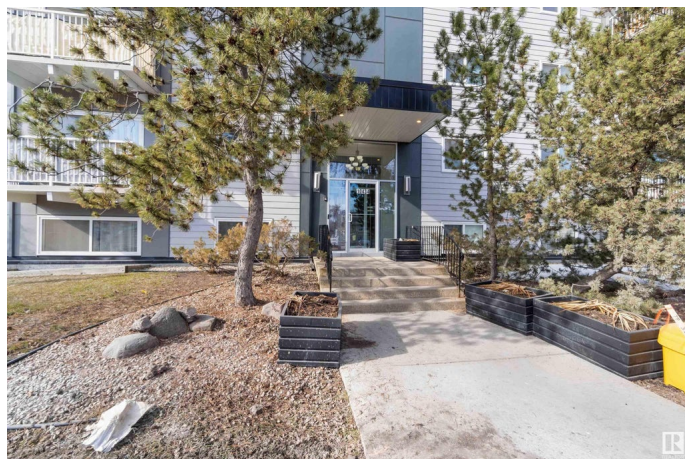
Westmount, Edmonton, AB

This top-floor unit in Sundial Manor offers a warm and inviting open-concept layout with stylish finishes, built-in storage, and a west-facing balcony. The kitchen features stainless steel appliances, soft-close drawers, and a raised breakfast bar for casual dining. A bright and spacious living and dining area provides an excellent space for entertaining. The bathroom includes a deep tub, tiled flooring, a modern vanity, and an upgraded toilet. A rare feature, the unit also comes with in-suite laundry—a valuable convenience for urban living. Located within walking distance to Paul Kane Park and the boutique shops of 124 Street and High Street.

Built in 1972

Essential Information

MLS® #	E4423909
Price	\$99,000
Bedrooms	1
Bathrooms	1.00
Full Baths	1
Square Footage	635
Acres	0.00
Year Built	1972
Type	Condo / Townhouse
Sub-Type	Lowrise Apartment



Style Studio Suite
Status Active

Community Information

Address 405 10434 125 Street
Area Edmonton
Subdivision Westmount
City Edmonton
County ALBERTA
Province AB
Postal Code T5N 1T3

Amenities

Amenities On Street Parking, Air Conditioner, Detectors Smoke, Intercom, Television Connection
Parking Stall

Interior

Appliances Air Conditioner-Window, Dishwasher-Built-In, Dryer, Refrigerator, Stove-Electric, Washer
Heating Baseboard, Natural Gas
of Stories 4
Stories 1
Has Basement Yes
Basement None, No Basement

Exterior

Exterior Wood, Brick, Stucco, Vinyl
Exterior Features Back Lane, Landscaped, Park/Reserve, Paved Lane, Public Transportation, Schools, Shopping Nearby
Roof Tar & Gravel
Construction Wood, Brick, Stucco, Vinyl
Foundation Concrete Perimeter

Additional Information

Date Listed March 4th, 2025
Days on Market 8
Zoning Zone 07
Condo Fee \$416

DATA IS DEEMED RELIABLE BUT IS NOT GUARANTEED ACCURATE BY THE REALTORS® ASSOCIATION OF EDMONTON. COPYRIGHT 2025 BY THE REALTORS® ASSOCIATION OF EDMONTON. ALL RIGHTS RESERVED. Trademarks are owned or controlled by the Canadian Real Estate Association (CREA) and identify real estate professionals who are members of CREA (REALTOR®, REALTORS®) and/or the quality of services they provide (MLS®, Multiple Listing Service®)

Listing information last updated on March 12th, 2025 at 7:47pm MDT