

Courtesy Of Jeff D Jackson Of Bode

\$449,900 - 1070 Berg Place, Leduc

MLS® #E4424100

\$449,900

3 Bedroom, 2.50 Bathroom, 1,544 sqft

Single Family on 0.00 Acres

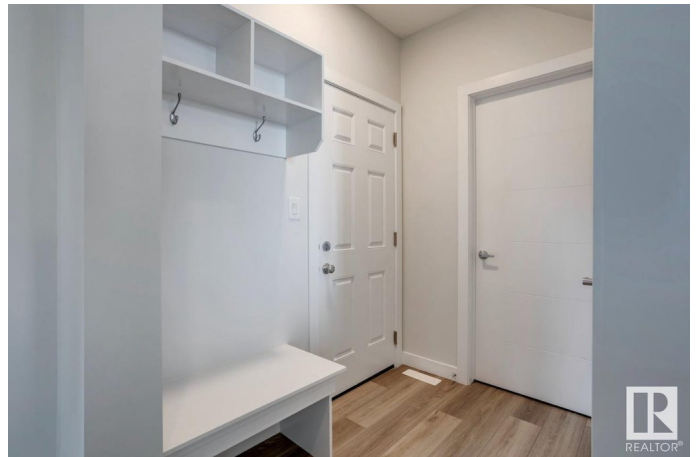
Black Stone, Leduc, AB

The Epic 20â€™™ by Look Master Builder is a beautifully designed 1,507 sq. ft. home that blends modern functionality with stylish craftsmanship. This thoughtfully planned three-bedroom, two-and-a-half-bath home offers an inviting open-concept main floor, featuring a spacious great room with a fireplace, a bright nook, and a modern kitchen with a large island and pantry. Upstairs, the master bedroom boasts a vaulted ceiling, ensuite, and walk-in closet, accompanied by two additional bedrooms, a convenient upstairs laundry, and a versatile bonus room for added living space. The home also includes a double attached garage and a rear deck, making it perfect for growing families. Designed with craftsmanship and efficiency in mind, the Epic 20â€™™ is an ideal blend of comfort and contemporary living. Photos are representative

Built in 2025

Essential Information

MLS® #	E4424100
Price	\$449,900
Bedrooms	3
Bathrooms	2.50
Full Baths	2
Half Baths	1



Square Footage	1,544
Acres	0.00
Year Built	2025
Type	Single Family
Sub-Type	Half Duplex
Style	2 Storey
Status	Active

Community Information

Address	1070 Berg Place
Area	Leduc
Subdivision	Black Stone
City	Leduc
County	ALBERTA
Province	AB
Postal Code	T9E 1M4

Amenities

Amenities	No Animal Home, No Smoking Home
Parking Spaces	4
Parking	Double Garage Attached

Interior

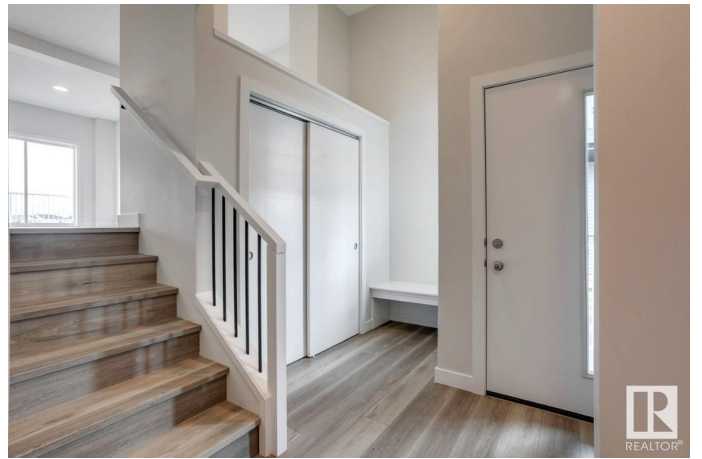
Interior Features	ensuite bathroom
Appliances	See Remarks
Heating	Forced Air-1, Natural Gas
Fireplace	Yes
Fireplaces	Insert
Stories	2
Has Basement	Yes
Basement	Full, Unfinished

Exterior

Exterior	Wood, Stone, Vinyl
Exterior Features	Park/Reserve, Playground Nearby, Schools, Shopping Nearby
Roof	Asphalt Shingles
Construction	Wood, Stone, Vinyl
Foundation	Concrete Perimeter

Additional Information

Date Listed March 5th, 2025
Days on Market 8
Zoning Zone 81



DATA IS DEEMED RELIABLE BUT IS NOT GUARANTEED ACCURATE BY THE REALTORS® ASSOCIATION OF EDMONTON. COPYRIGHT 2025 BY THE REALTORS® ASSOCIATION OF EDMONTON. ALL RIGHTS RESERVED. Trademarks are owned or controlled by the Canadian Real Estate Association (CREA) and identify real estate professionals who are members of CREA (REALTOR®, REALTORS®) and/or the quality of services they provide (MLS®, Multiple Listing Service®)

Listing information last updated on March 12th, 2025 at 11:17pm MDT