

Courtesy Of Rhonda C Navratil Of RE/MAX River City

\$849,900 - 568 Stewart Crescent, Edmonton

MLS® #E4424368

\$849,900

4 Bedroom, 3.50 Bathroom, 2,539 sqft

Single Family on 0.00 Acres

Summerside, Edmonton, AB

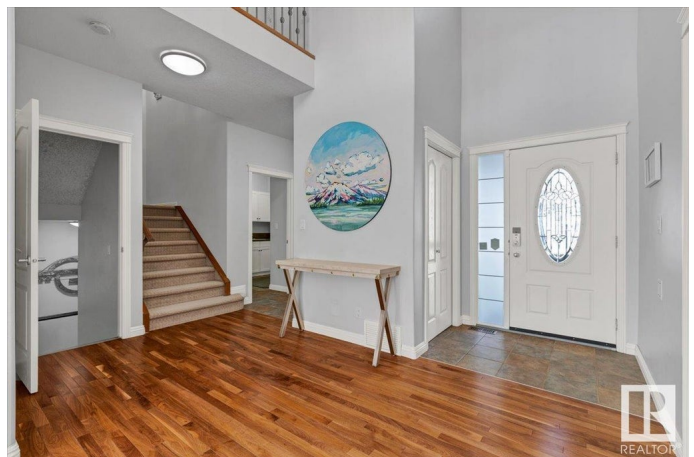
Executive Jayman Master Built 2540 sq ft with oversized heated TRIPLE CAR GARAGE + extended driveway on quiet cul de sac in Lake Summerside. Short walk to the pond, walking paths & FMM Catholic K-9 school or the Beach Club at the Lake. Bright open floor plan with 9'™ main floor ceilings + 2 storey entry & perfect main floor office and the 'sanity saver' mudroom. Sunny kitchen dining area leads to your gorgeous 2 tier maintenance free Trex deck. This home is designed for entertaining, Great room flows seamlessly from the Gourmet Kitchen with huge granite Island & walk-in pantry. Primary suite is king sized with separate vanities, soaker tub, double shower, toilet closet & huge walk-in closet! Secondary bedrooms are bright & spacious + one has a walk-in closet. Professionally finished basement with gym, Game Night fun is on in the sound proofed media room with wet bar, 4th bedroom. BuiltGreen Alberta energy efficient home & tankless HWT. You will love your new home & living the lake lifestyle year round!

Built in 2006

Essential Information

MLS® # E4424368

Price \$849,900



Bedrooms	4
Bathrooms	3.50
Full Baths	3
Half Baths	1
Square Footage	2,539
Acres	0.00
Year Built	2006
Type	Single Family
Sub-Type	Detached Single Family
Style	2 Storey
Status	Active

Community Information

Address	568 Stewart Crescent
Area	Edmonton
Subdivision	Summerside
City	Edmonton
County	ALBERTA
Province	AB
Postal Code	T6X 1B6

Amenities

Amenities	Air Conditioner, Barbecue-Built-In, Ceiling 9 ft., Closet Organizers, Club House, Deck, Exercise Room, Lake Privileges, See Remarks
Parking Spaces	6
Parking	Heated, Over Sized, Triple Garage Attached

Interior

Interior Features	ensuite bathroom
Appliances	Air Conditioning-Central, Dishwasher-Built-In, Dryer, Garage Control, Garage Opener, Garburator, Humidifier-Power(Furnace), Oven-Built-In, Oven-Microwave, Storage Shed, Stove-Countertop Electric, Vacuum Systems, Washer, Window Coverings, Refrigerators-Two
Heating	Forced Air-1, Natural Gas
Fireplace	Yes
Fireplaces	Mantel, Stone Facing, Tile Surround
Stories	3
Has Basement	Yes
Basement	Full, Finished

Exterior

Exterior	Wood, Stone, Vinyl
Exterior Features	Beach Access, Boating, Fenced, Golf Nearby, Lake Access Property, Landscaped, Picnic Area, Playground Nearby, Public Transportation, Recreation Use, Schools, Shopping Nearby, Private Park Access
Roof	Asphalt Shingles
Construction	Wood, Stone, Vinyl
Foundation	Concrete Perimeter

School Information

Elementary	Jan Reimer School K-6
Middle	Jan Reimer School 7-9
High	J.Percy Page/Holy Trinity

Additional Information

Date Listed	March 5th, 2025
Days on Market	7
Zoning	Zone 53
HOA Fees	453.02
HOA Fees Freq.	Annually

DATA IS DEEMED RELIABLE BUT IS NOT GUARANTEED ACCURATE BY THE REALTORS® ASSOCIATION OF EDMONTON. COPYRIGHT 2025 BY THE REALTORS® ASSOCIATION OF EDMONTON. ALL RIGHTS RESERVED. Trademarks are owned or controlled by the Canadian Real Estate Association (CREA) and identify real estate professionals who are members of CREA (REALTOR®, REALTORS®) and/or the quality of services they provide (MLS®, Multiple Listing Service®)

Listing information last updated on March 12th, 2025 at 9:02pm MDT