

\$419,800 - 47 Dayton Crescent, St. Albert

MLS® #E4424840

\$419,800

4 Bedroom, 3.00 Bathroom, 1,143 sqft
Single Family on 0.00 Acres

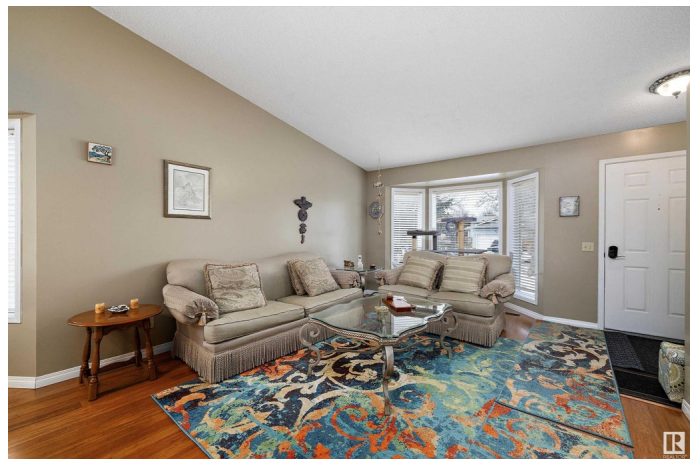
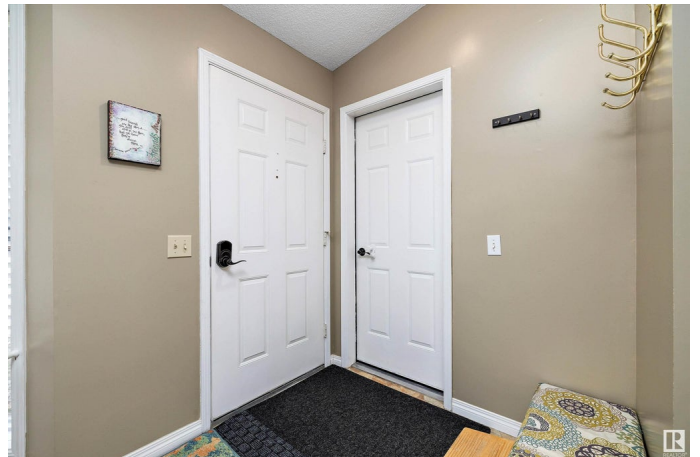
Deer Ridge (St. Albert), St. Albert, AB

Welcome to this beautifully maintained 4-level split in the family-friendly neighbourhood of Deer Ridge, St. Albert! With nearly 2,133 sq. ft. of immaculate living space, this home offers a BRIGHT EAT-IN kitchen overlooking a spacious family room with a WOOD-BURNING Fireplace. The main floor features a lovely living and dining area, perfect for gatherings. Upstairs, you'll find a primary bedroom with 3-pc ensuite, plus two more bedrooms and a 4-piece bath. The third level has a FOURTH bedroom and full bath, while the finished basement includes an additional REC ROOM, Storage Room and Laundry area. Recent upgrades include a NEW DECK and fence door, freshly painted cabinets with new handles, new washer, dryer, toilets, faucets, and shower-heads. Outside, the PRIVATE YARD is perfect for summer BBQs, GARDENING, or simply soaking up some vitamin D. Close to schools, shopping, parks, and Anthony Henday access—this home is a must-see!

Built in 1987

Essential Information

MLS® #	E4424840
Price	\$419,800
Bedrooms	4



Bathrooms	3.00
Full Baths	3
Square Footage	1,143
Acres	0.00
Year Built	1987
Type	Single Family
Sub-Type	Detached Single Family
Style	4 Level Split
Status	Active

Community Information

Address	47 Dayton Crescent
Area	St. Albert
Subdivision	Deer Ridge (St. Albert)
City	St. Albert
County	ALBERTA
Province	AB
Postal Code	T8N 4X7

Amenities

Amenities	Off Street Parking, On Street Parking, Air Conditioner, Deck, No Smoking Home, Patio
Parking	Double Garage Attached

Interior

Interior Features	ensuite bathroom
Appliances	Air Conditioning-Central, Dishwasher-Built-In, Dryer, Garage Control, Garage Opener, Hood Fan, Oven-Microwave, Refrigerator, Stove-Electric, Washer, Window Coverings
Heating	Forced Air-1, Natural Gas
Fireplace	Yes
Fireplaces	Brick Facing
Stories	4
Has Basement	Yes
Basement	Full, Finished

Exterior

Exterior	Wood, Brick, Vinyl
Exterior Features	Fenced, Landscaped, No Back Lane, Playground Nearby, Public

Transportation, Schools, Shopping Nearby

Roof Asphalt Shingles
Construction Wood, Brick, Vinyl
Foundation Concrete Perimeter

School Information

Elementary Muriel Martin Elementary
Middle William D. Cuts
High Bellerose Composite High

Additional Information

Date Listed March 9th, 2025
Days on Market 3
Zoning Zone 24

DATA IS DEEMED RELIABLE BUT IS NOT GUARANTEED ACCURATE BY THE REALTORS® ASSOCIATION OF EDMONTON. COPYRIGHT 2025 BY THE REALTORS® ASSOCIATION OF EDMONTON. ALL RIGHTS RESERVED. Trademarks are owned or controlled by the Canadian Real Estate Association (CREA) and identify real estate professionals who are members of CREA (REALTOR®, REALTORS®) and/or the quality of services they provide (MLS®, Multiple Listing Service®)

Listing information last updated on March 12th, 2025 at 8:17pm MDT