

Courtesy Of Che Taylor Of MaxWell Challenge Realty

\$499,900 - 366 Stout Lane, Leduc

MLS® #E4424892

\$499,900

3 Bedroom, 2.50 Bathroom, 1,443 sqft
Single Family on 0.00 Acres

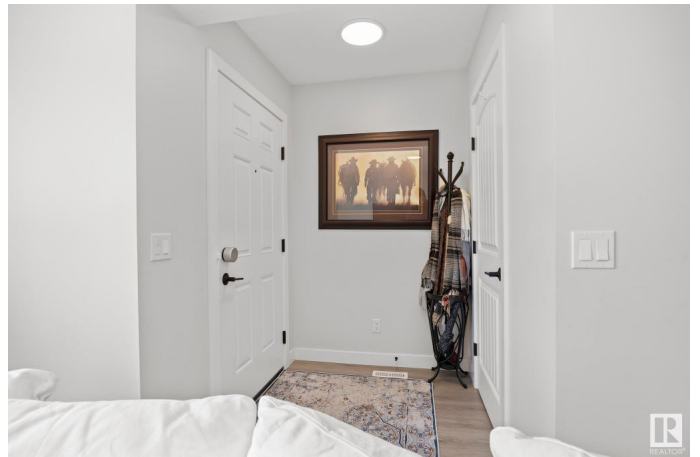
Southfork, Leduc, AB

~ GORGEOUS 2 STOREY with a HEATED TRIPLE DETACHED GARAGE ~ CENTRAL AIR CONDITIONING ~ 3 BEDROOM, 2.5 BATHS, MINT CONDITION ~ Check out this amazing home in Southfork. The main floor is very open and have a large livignroom, huge dining are and an awesome kitchen with STAINLESS STEEL appliances. The kitchen features a pantry, quartz countertops, lots of cupboard space and an island. Upstairs there are 3 large bedrooms including the primary bedroom with a full ensuite and walk-in closet. There is no carpet in this super clean home, just engineered laminate throughout and some tiles in the bathrooms. The garage is one of a kind with tons of space and is perfect for full sized trucks and all your toys. The home has a tankless hot water heater and an HRV unit plus there are solar panels on the roof which help take a bite out of your electrical bill. The home is close to schools and amenities and is in move in ready condition. Hurry before this one is gone.

Built in 2020

Essential Information

MLS® #	E4424892
Price	\$499,900
Bedrooms	3



Bathrooms	2.50
Full Baths	2
Half Baths	1
Square Footage	1,443
Acres	0.00
Year Built	2020
Type	Single Family
Sub-Type	Detached Single Family
Style	2 Storey
Status	Active

Community Information

Address	366 Stout Lane
Area	Leduc
Subdivision	Southfork
City	Leduc
County	ALBERTA
Province	AB
Postal Code	T9E 1K4

Amenities

Amenities	Detectors Smoke, Exterior Walls- 2"x6", Hot Water Tankless, No Smoking Home, Television Connection, Vinyl Windows, Solar Equipment
Parking	Heated, Triple Garage Detached

Interior

Interior Features	ensuite bathroom
Appliances	Dishwasher-Built-In, Dryer, Garage Opener, Oven-Microwave, Refrigerator, Stove-Electric, Washer, Window Coverings, Garage Heater
Heating	Forced Air-1, Natural Gas
Stories	2
Has Basement	Yes
Basement	Full, Unfinished

Exterior

Exterior	Wood, Composition, Vinyl
Exterior Features	Airport Nearby, Back Lane, Cul-De-Sac, Flat Site, Golf Nearby, Landscaped, Paved Lane, Playground Nearby, Schools, Shopping Nearby, Partially Fenced

Roof	Asphalt Shingles
Construction	Wood, Composition, Vinyl
Foundation	Concrete Perimeter

Additional Information

Date Listed	March 10th, 2025
-------------	------------------

Days on Market	2
----------------	---

Zoning	Zone 81
--------	---------

DATA IS DEEMED RELIABLE BUT IS NOT GUARANTEED ACCURATE BY THE REALTORS® ASSOCIATION OF EDMONTON. COPYRIGHT 2025 BY THE REALTORS® ASSOCIATION OF EDMONTON. ALL RIGHTS RESERVED. Trademarks are owned or controlled by the Canadian Real Estate Association (CREA) and identify real estate professionals who are members of CREA (REALTOR®, REALTORS®) and/or the quality of services they provide (MLS®, Multiple Listing Service®)

Listing information last updated on March 12th, 2025 at 3:02pm MDT