

\$485,000 - 3848 Powell Wynd, Edmonton

MLS® #E4424898

\$485,000

3 Bedroom, 2.50 Bathroom, 1,544 sqft

Single Family on 0.00 Acres

Paisley, Edmonton, AB

Stunning 1550 sq ft 2 story half duplex offering incredible views in the desirable community of Paisley south Edmonton. On the main floor you will find an amazing open concept living and dining area; electric fireplace, walk-in pantry, granite countertops, loads of cabinets. Sunshine coming through the window and patio doors, leading to a large deck to enjoy your morning coffee or evening BBQ. Upstairs you will find 3 good size bedrooms, Walk-in closet, 4 pc Ensuite and convenient 2nd floor laundry. Attached garage. 20-minute drive to Edmonton International Airport, shopping, schools, dining and many amenities, easy access to Henday.

Built in 2014

Essential Information

MLS® #	E4424898
Price	\$485,000
Bedrooms	3
Bathrooms	2.50
Full Baths	2
Half Baths	1
Square Footage	1,544
Acres	0.00
Year Built	2014
Type	Single Family



Sub-Type Half Duplex
Style 2 Storey
Status Active

Community Information

Address 3848 Powell Wynd
Area Edmonton
Subdivision Paisley
City Edmonton
County ALBERTA
Province AB
Postal Code T6W 2W9

Amenities

Amenities Deck, Detectors Smoke, Hot Water, Home Office, Smoking Home
Parking Front Drive Access, Single Garage

Interior

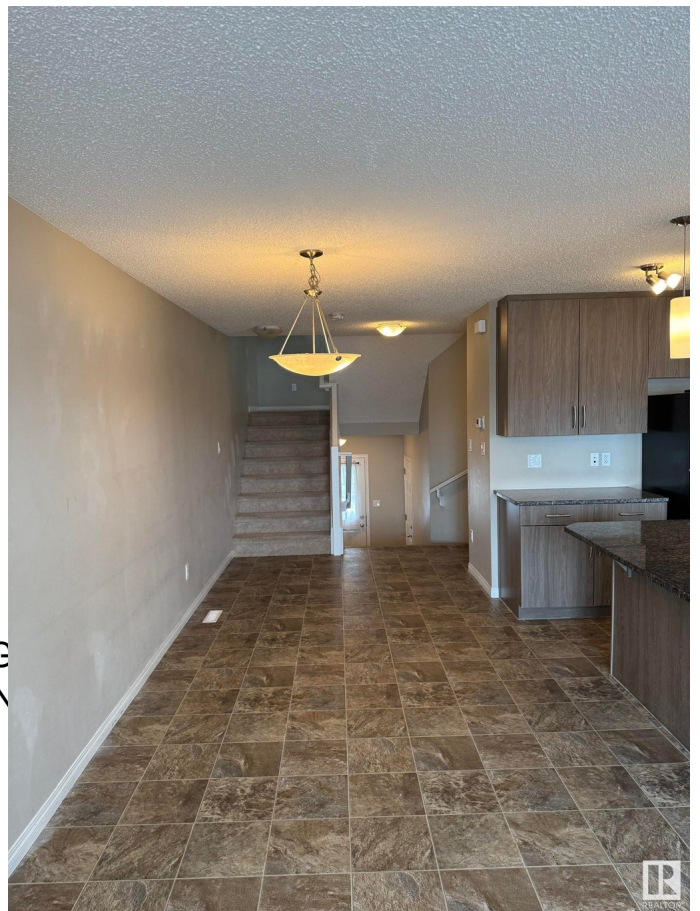
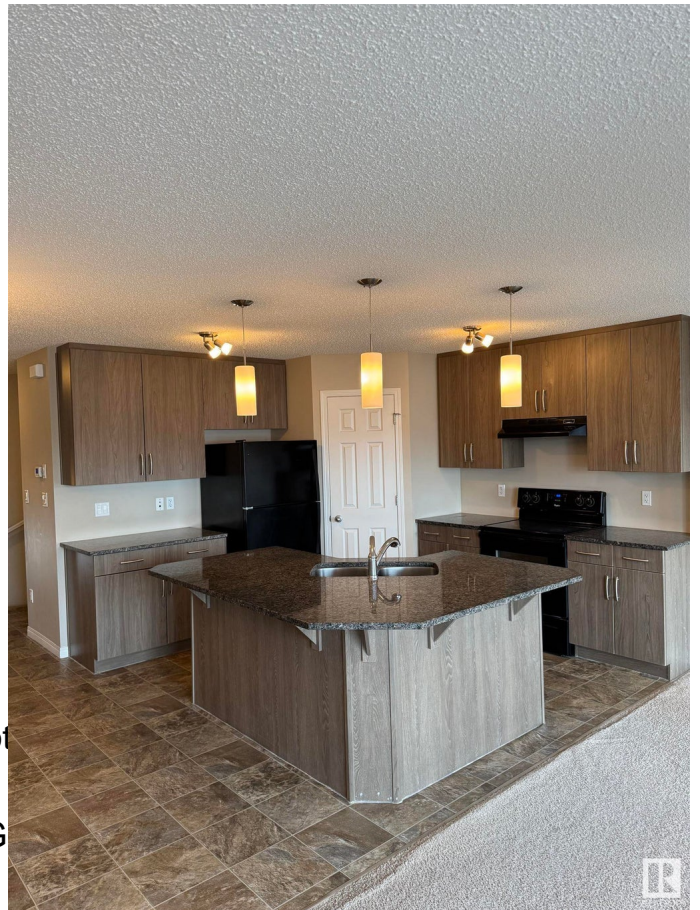
Interior Features ensuite bathroom
Appliances Dishwasher-Built-In, Dryer, Stove-Electric, Washer
Heating Forced Air-1, Natural Gas
Fireplace Yes
Fireplaces Wall Mount
Stories 2
Has Basement Yes
Basement Full, Unfinished

Exterior

Exterior Wood, Vinyl
Exterior Features Airport Nearby, Fenced, Greenhouse, Gated, Near Transit, Nearby, Schools, Shopping Mall
Roof Asphalt Shingles
Construction Wood, Vinyl
Foundation Concrete Perimeter

School Information

Elementary Monsignor Fee Otterson
Middle Donald Getty School



High Father Michael McCaffery

Additional Information

Date Listed March 7th, 2025

Days on Market 5

Zoning Zone 55

DATA IS DEEMED RELIABLE BUT IS NOT GUARANTEED ACCURATE BY THE REALTORS® ASSOCIATION OF EDMONTON. COPYRIGHT 2025 BY THE REALTORS® ASSOCIATION OF EDMONTON. ALL RIGHTS RESERVED. Trademarks are owned or controlled by the Canadian Real Estate Association (CREA) and identify real estate professionals who are members of CREA (REALTOR®, REALTORS®) and/or the quality of services they provide (MLS®, Multiple Listing Service®)

Listing information last updated on March 12th, 2025 at 4:02pm MDT