

## \$485,000 - 55 Avebury Court, Sherwood Park

MLS® #E4425089

### \$485,000

4 Bedroom, 3.50 Bathroom, 1,519 sqft  
Single Family on 0.00 Acres

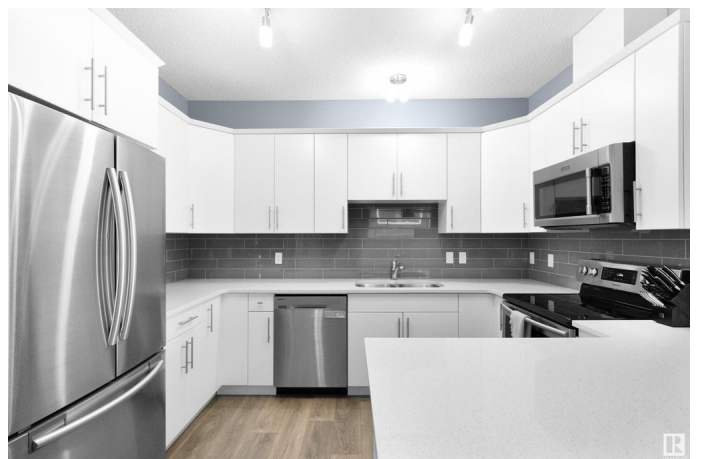
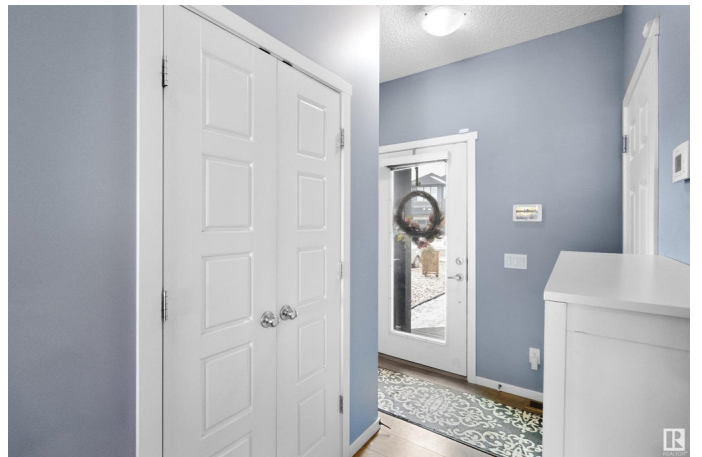
Aspen Trails, Sherwood Park, AB

Nestled on a quiet cul-de-dac in the sought after community of Aspen Trails, you find this beautiful and fully finished 1500 square foot half-duplex. Entertain on the open main floor complete with gorgeous kitchen, large dining area, spacious living room 2 pce bath, with access to the deck. Upstairs you will find a large master suite featuring large walk in closet and 4 pce ensuite, 2 additional bedrooms, full bathroom and laundry room. The basement was PROFESSIONALLY developed by the builder and completes this home with a TV/rec room area, a 4th bedroom, 3 pce bathroom and small flex space.... perfect for a home office or meditation space. All of this, close to shopping, walking distance to Abbey Road playground and walking trails.

Built in 2016

### Essential Information

MLS® #	E4425089
Price	\$485,000
Bedrooms	4
Bathrooms	3.50
Full Baths	3
Half Baths	1
Square Footage	1,519
Acres	0.00



Year Built	2016
Type	Single Family
Sub-Type	Half Duplex
Style	2 Storey
Status	Active

### **Community Information**

Address	55 Avebury Court
Area	Sherwood Park
Subdivision	Aspen Trails
City	Sherwood Park
County	ALBERTA
Province	AB
Postal Code	T8H 0Z3

### **Amenities**

Amenities	See Remarks
Parking	Double Garage Attached

### **Interior**

Interior Features	ensuite bathroom
Appliances	Dishwasher-Built-In, Dryer, Microwave Hood Fan, Refrigerator, Stove-Electric, Washer, Window Coverings
Heating	Forced Air-1, Natural Gas
Stories	3
Has Basement	Yes
Basement	Full, Finished

### **Exterior**

Exterior	Wood, Vinyl
Exterior Features	See Remarks
Roof	Asphalt Shingles
Construction	Wood, Vinyl
Foundation	Concrete Perimeter

### **Additional Information**

Date Listed	March 11th, 2025
Days on Market	1
Zoning	Zone 25

DATA IS DEEMED RELIABLE BUT IS NOT GUARANTEED ACCURATE BY THE REALTORS® ASSOCIATION OF EDMONTON. COPYRIGHT 2025 BY THE REALTORS® ASSOCIATION OF EDMONTON. ALL RIGHTS RESERVED. Trademarks are owned or controlled by the Canadian Real Estate Association (CREA) and identify real estate professionals who are members of CREA (REALTOR®, REALTORS®) and/or the quality of services they provide (MLS®, Multiple Listing Service®)

Listing information last updated on March 12th, 2025 at 4:47pm MDT