

\$179,900 - 808 10134 100 Street, Edmonton

MLS® #E4433286

\$179,900

1 Bedroom, 1.00 Bathroom, 545 sqft

Condo / Townhouse on 0.00 Acres

Downtown (Edmonton), Edmonton, AB

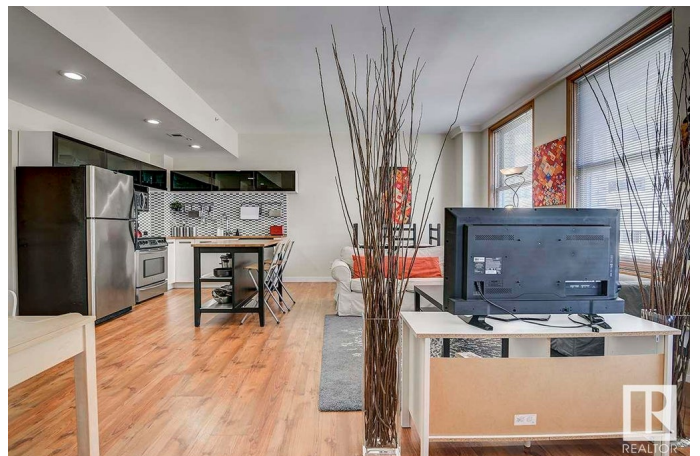
Experience elevated downtown living in this beautifully updated north-facing loft in the iconic McLeod Building — one of Edmonton's most historic and architecturally significant addresses. Perched above the bustle, Unit #808 offers a peaceful urban retreat overlooking Rice Howard Way, where leafy summer trees, vibrant patios, and pedestrian charm set the scene. Inside, you'll enjoy a spacious open-concept layout flooded with natural light, soaring ceilings, and character-rich original wood-framed windows. Recent upgrades with a renovated kitchen with modern appliances, stylish flooring and tilework. The condo combines timeless heritage with modern convenience — and the condo fees include power, heat, and water, adding value and ease to your lifestyle. Located in a designated Provincial Historic Resource, the McLeod Building boasts an elegant marble lobby and timeless architectural details. You're just steps from the LRT, bus routes, and some of Edmonton's most notable landmarks.

Built in 1905

Essential Information

MLS® # E4433286

Price \$179,900



Bedrooms	1
Bathrooms	1.00
Full Baths	1
Square Footage	545
Acres	0.00
Year Built	1905
Type	Condo / Townhouse
Sub-Type	Apartment High Rise
Style	Loft
Status	Active

Community Information

Address	808 10134 100 Street
Area	Edmonton
Subdivision	Downtown (Edmonton)
City	Edmonton
County	ALBERTA
Province	AB
Postal Code	T5J 0N8

Amenities

Amenities	On Street Parking, Security Door
Parking	See Remarks

Interior

Appliances	Dishwasher-Built-In, Oven-Microwave, Refrigerator, Stove-Electric, Washer, Window Coverings, See Remarks
Heating	Hot Water, Natural Gas
# of Stories	9
Stories	1
Has Basement	Yes
Basement	None, No Basement

Exterior

Exterior	Concrete, Brick
Exterior Features	Corner Lot, Picnic Area, Playground Nearby, Public Transportation, Schools, Shopping Nearby, View City, View Downtown
Roof	Tar & Gravel
Construction	Concrete, Brick

Foundation Concrete Perimeter

Additional Information

Date Listed April 29th, 2025
Days on Market 24
Zoning Zone 12
Condo Fee \$545

DATA IS DEEMED RELIABLE BUT IS NOT GUARANTEED ACCURATE BY THE REALTORS® ASSOCIATION OF EDMONTON. COPYRIGHT 2025 BY THE REALTORS® ASSOCIATION OF EDMONTON. ALL RIGHTS RESERVED.Trademarks are owned or controlled by the Canadian Real Estate Association (CREA) and identify real estate professionals who are members of CREA (REALTOR®, REALTORS®) and/or the quality of services they provide (MLS®, Multiple Listing Service®)
Listing information last updated on May 23rd, 2025 at 6:47pm MDT