

# \$587,895 - 408 27 Street, Edmonton

MLS® #E4434616

**\$587,895**

4 Bedroom, 3.00 Bathroom, 1,887 sqft  
Single Family on 0.00 Acres

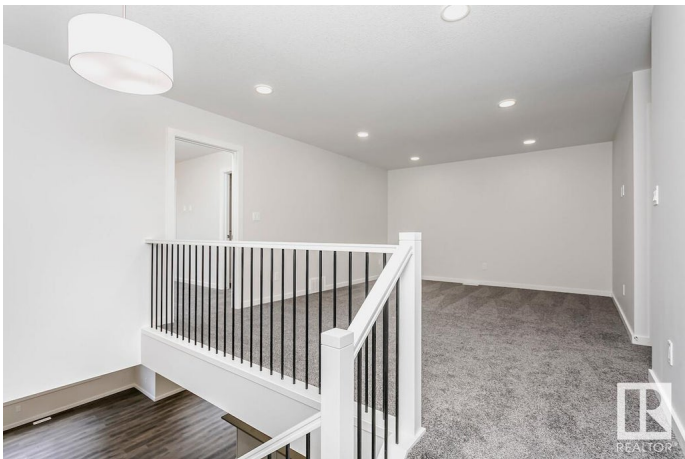
Alces, Edmonton, AB

The Stella is a spacious single family home with double front attached garage home, 9' ceilings on the main floor bedroom and full bathroom featuring a stand-up shower with tiled walls for your short/long term visitor's convenience. The kitchen overlooks the great room with a 50" linear fireplace, dining area, and features quartz counters with extensive cabinet space. Spacious walk-through pantry which leads to the mudroom. A side entrance is included for future development. Basement ceiling height upgraded to 9', for a more spacious feel, and 3-piece rough-in for future bathroom. Metal spindle railing on the main and second floor. The primary ensuite has dual sinks in the vanity and a 5' stand up shower with tiled walls. Upstairs you will find a central bonus room, 3 bedrooms, laundry, and linen closet. Photos are representative.

Built in 2025

## Essential Information

MLS® #	E4434616
Price	\$587,895
Bedrooms	4
Bathrooms	3.00
Full Baths	3
Square Footage	1,887



Acres	0.00
Year Built	2025
Type	Single Family
Sub-Type	Detached Single Family
Style	2 Storey
Status	Active

### **Community Information**

Address	408 27 Street
Area	Edmonton
Subdivision	Alces
City	Edmonton
County	ALBERTA
Province	AB
Postal Code	T6X 3H9

### **Amenities**

Amenities	Closet Organizers, See Remarks
Parking Spaces	4
Parking	Double Garage Attached

### **Interior**

Interior Features	ensuite bathroom
Appliances	None
Heating	Forced Air-1, Natural Gas
Fireplace	Yes
Fireplaces	Insert
Stories	2
Has Basement	Yes
Basement	Full, Unfinished

### **Exterior**

Exterior	Wood, Vinyl
Exterior Features	Park/Reserve, Playground Nearby, Shopping Nearby
Roof	Asphalt Shingles
Construction	Wood, Vinyl
Foundation	Concrete Perimeter

### **Additional Information**

Date Listed May 5th, 2025

Days on Market 41

Zoning Zone 53

DATA IS DEEMED RELIABLE BUT IS NOT GUARANTEED ACCURATE BY THE REALTORS® ASSOCIATION OF EDMONTON. COPYRIGHT 2025 BY THE REALTORS® ASSOCIATION OF EDMONTON. ALL RIGHTS RESERVED. Trademarks are owned or controlled by the Canadian Real Estate Association (CREA) and identify real estate professionals who are members of CREA (REALTOR®, REALTORS®) and/or the quality of services they provide (MLS®, Multiple Listing Service®)

Listing information last updated on June 15th, 2025 at 7:32am MDT