

\$389,999 - 6853 Cardinal Link Link, Edmonton

MLS® #E4436914

\$389,999

3 Bedroom, 2.50 Bathroom, 1,342 sqft
Single Family on 0.00 Acres

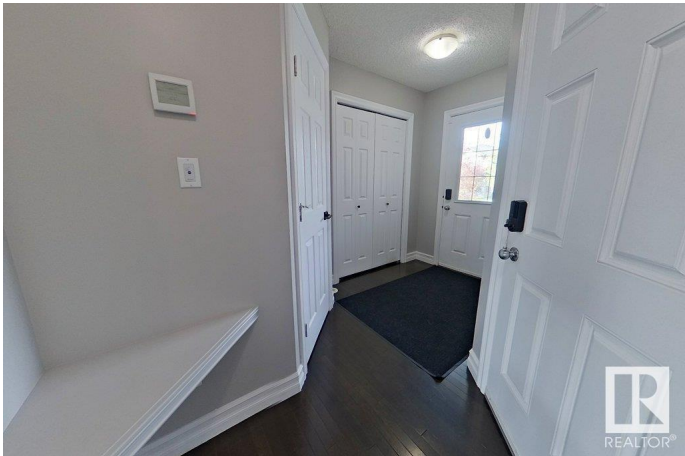
Chappelle Area, Edmonton, AB

This pristine, original owner half duplex in the sought-after Creekwood Chappelle area of Edmonton. Featuring three bedrooms upstairs and the convenience of an upper-level laundry room, this home is perfect for families or professionals. The interior boasts stunning hardwood floors on the main level, adding warmth and sophistication to the bright, open layout. A large back yard offers ample space for outdoor activities, gardening, or relaxation. Equipped with an endless hot water tank, the home ensures uninterrupted comfort. Meticulously maintained, the functional layout is ideal for both daily living and entertaining. Located in the heart of Creekwood Chappelle, youâ€™™ll enjoy proximity to parks, schools, shopping, and major routes. This half duplex, blending pride of ownership ready to welcome its next chapter.

Built in 2012

Essential Information

MLS® #	E4436914
Price	\$389,999
Bedrooms	3
Bathrooms	2.50
Full Baths	2
Half Baths	1
Square Footage	1,342



Acres	0.00
Year Built	2012
Type	Single Family
Sub-Type	Half Duplex
Style	2 Storey
Status	Active

Community Information

Address	6853 Cardinal Link Link
Area	Edmonton
Subdivision	Chappelle Area
City	Edmonton
County	ALBERTA
Province	AB
Postal Code	T6W 1Z1

Amenities

Amenities	Deck, HRV System
Parking Spaces	2
Parking	Single Garage Attached

Interior

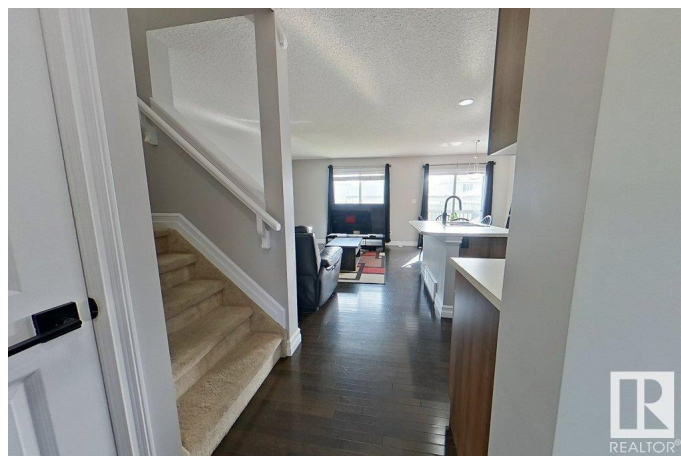
Interior Features	ensuite bathroom
Appliances	Dishwasher - Energy Star, Dryer, Garage Control, Garage Opener, Microwave Hood Fan, Refrigerator, Stove-Electric, Washer, Curtains and Blinds
Heating	Forced Air-1, Natural Gas
Stories	2
Has Basement	Yes
Basement	Full, Unfinished

Exterior

Exterior	Wood, Stone, Vinyl
Exterior Features	Golf Nearby, No Back Lane, Schools, Shopping Nearby
Roof	Asphalt Shingles
Construction	Wood, Stone, Vinyl
Foundation	Concrete Perimeter

Additional Information

Date Listed	May 16th, 2025
Days on Market	4
Zoning	Zone 55
HOA Fees	100
HOA Fees Freq.	Annually



DATA IS DEEMED RELIABLE BUT IS NOT GUARANTEED ACCURATE BY THE REALTORS® ASSOCIATION OF EDMONTON. COPYRIGHT 2025 BY THE REALTORS® ASSOCIATION OF EDMONTON. ALL RIGHTS RESERVED. Trademarks are owned or controlled by the Canadian Real Estate Association (CREA) and identify real estate professionals who are members of CREA (REALTOR®, REALTORS®) and/or the quality of services they provide (MLS®, Multiple Listing Service®)

Listing information last updated on May 20th, 2025 at 12:17am MDT