

## \$550,000 - 2256 194 Street, Edmonton

MLS® #E4437388

**\$550,000**

3 Bedroom, 2.50 Bathroom, 1,958 sqft

Single Family on 0.00 Acres

River's Edge, Edmonton, AB

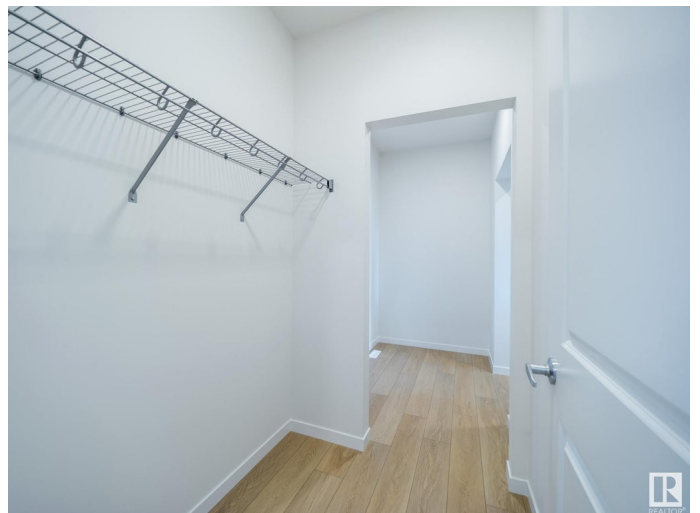
Step into elevated living w/ this thoughtfully crafted Coventry home, where 9' ceilings & an open layout create a sense of calm & spaciousness. The chef-inspired kitchen is a dream for home cooks & hosts alike, w/ quartz counters, a stylish tile backsplash, & a convenient walkthrough pantry that keeps everything within reach. At the back of the home, the Great Room & dining area offer a peaceful retreatâ€”ideal for quiet evenings or gathering w/ friends. A mudroom & half bath add function & flow to the main floor. Upstairs, the primary suite feels like a sanctuary, complete w/ a spa-like 5pc ensuite that includes dual sinks, a soaker tub, stand-up shower, & a generous walk-in closet. Two additional bedrooms, a full bath, upstairs laundry, & a bright bonus room provide comfort & convenience for the whole family. Built w/ care, craftsmanship, & attention to detail, every Coventry home is protected by the Alberta New Home Warranty Programâ€”offering lasting peace of mind. Some photos have been virtually staged

Built in 2025

### Essential Information

MLS® # E4437388

Price \$550,000



|                |                        |
|----------------|------------------------|
| Bedrooms       | 3                      |
| Bathrooms      | 2.50                   |
| Full Baths     | 2                      |
| Half Baths     | 1                      |
| Square Footage | 1,958                  |
| Acres          | 0.00                   |
| Year Built     | 2025                   |
| Type           | Single Family          |
| Sub-Type       | Detached Single Family |
| Style          | 2 Storey               |
| Status         | Active                 |

### Community Information

|             |                 |
|-------------|-----------------|
| Address     | 2256 194 Street |
| Area        | Edmonton        |
| Subdivision | River's Edge    |
| City        | Edmonton        |
| County      | ALBERTA         |
| Province    | AB              |
| Postal Code | T6M 3B7         |

### Amenities

|           |   |
|-----------|---|
| Amenities | Carbon Monoxide Detectors, Ceiling 9 ft., Detectors Smoke, Smart/Program. Thermostat, Vinyl Windows, HRV System |
| Parking   | Double Garage Attached  |

### Interior

|                   |                           |
|-------------------|---------------------------|
| Interior Features | ensuite bathroom          |
| Appliances        | None                      |
| Heating           | Forced Air-1, Natural Gas |
| Stories           | 2                         |
| Has Basement      | Yes                       |
| Basement          | Full, Unfinished          |

### Exterior

|                   |  |
|-------------------|--|
| Exterior          | Wood, Stone, Vinyl                       |
| Exterior Features | Playground Nearby, Public Transportation |
| Roof              | Asphalt Shingles                         |
| Construction      | Wood, Stone, Vinyl                       |

Foundation                      Concrete Perimeter

**Additional Information**

Date Listed                      May 20th, 2025

Days on Market                31

Zoning                            Zone 57

DATA IS DEEMED RELIABLE BUT IS NOT GUARANTEED ACCURATE BY THE REALTORS® ASSOCIATION OF EDMONTON. COPYRIGHT 2025 BY THE REALTORS® ASSOCIATION OF EDMONTON. ALL RIGHTS RESERVED.Trademarks are owned or controlled by the Canadian Real Estate Association (CREA) and identify real estate professionals who are members of CREA (REALTOR®, REALTORS®) and/or the quality of services they provide (MLS®, Multiple Listing Service®)

Listing information last updated on June 20th, 2025 at 6:17am MDT