

\$479,000 - 31 Elsinore Place, Edmonton

MLS® #E4437534

\$479,000

4 Bedroom, 3.00 Bathroom, 1,349 sqft

Single Family on 0.00 Acres

Elsinore, Edmonton, AB

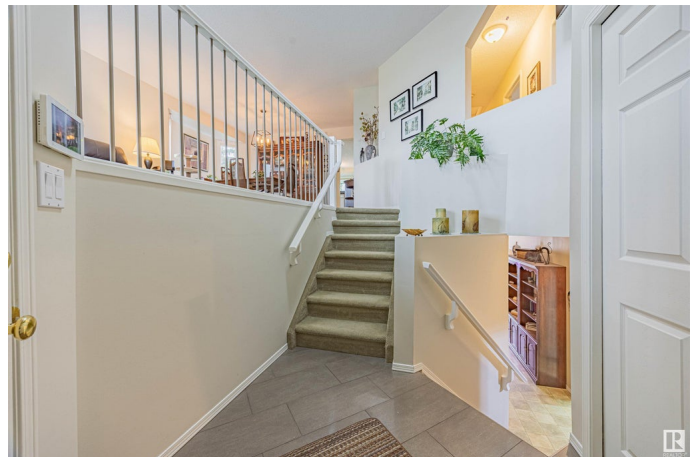
Welcome to this beautifully maintained 4-bed/3 bath bi-level, offering over 2,600 sq ft of thoughtfully designed living space in Elsinore. From the moment you arrive, the gorgeous, landscaped yard and impressive curb appeal set the tone for this exceptional home. Inside, you'll find a bright, open-concept layout filled with natural light streaming through large windows creating a warm and inviting atmosphere in every room. Remote-control blinds in the living and dining areas offer both convenience and comfort. The heart of the home features a spacious kitchen that opens directly to a deck overlooking the backyard—perfect for morning coffee, outdoor dining, or entertaining. The main level also includes a private primary with a full ensuite, plus two additional bedrooms and another full bathroom. Downstairs, the fully finished basement expands your living space with a welcoming family room featuring a cozy gas fireplace, laundry room, hidden cold storage, hobby room, bathroom, bedroom and plenty of storage.

Built in 1994

Essential Information

MLS® # E4437534

Price \$479,000



Bedrooms	4
Bathrooms	3.00
Full Baths	3
Square Footage	1,349
Acres	0.00
Year Built	1994
Type	Single Family
Sub-Type	Detached Single Family
Style	Bi-Level
Status	Active

Community Information

Address	31 Elsinore Place
Area	Edmonton
Subdivision	Elsinore
City	Edmonton
County	ALBERTA
Province	AB
Postal Code	T5X 5W3

Amenities

Amenities	Deck, Hot Water Natural Gas, No Smoking Home
Parking	Double Garage Attached

Interior

Interior Features	ensuite bathroom
Appliances	Dishwasher-Built-In, Garage Control, Garage Opener, Microwave Hood Fan, Refrigerator, Stacked Washer/Dryer, Stove-Electric, Window Coverings, Curtains and Blinds
Heating	Forced Air-1, Natural Gas
Fireplace	Yes
Fireplaces	Fresh Air, Heatilator/Fan
Stories	2
Has Basement	Yes
Basement	Full, Finished

Exterior

Exterior	Wood, Vinyl
Exterior Features	Fenced, Landscaped, Low Maintenance Landscape, Playground

Nearby, Public Transportation, Schools, Shopping Nearby

Roof	Asphalt Shingles
Construction	Wood, Vinyl
Foundation	Concrete Perimeter

School Information

Elementary	Baturyn St Charles Lorelei
Middle	Mary Butterworth

Additional Information

Date Listed	May 21st, 2025
Days on Market	4
Zoning	Zone 27

DATA IS DEEMED RELIABLE BUT IS NOT GUARANTEED ACCURATE BY THE REALTORS® ASSOCIATION OF EDMONTON. COPYRIGHT 2025 BY THE REALTORS® ASSOCIATION OF EDMONTON. ALL RIGHTS RESERVED. Trademarks are owned or controlled by the Canadian Real Estate Association (CREA) and identify real estate professionals who are members of CREA (REALTOR®, REALTORS®) and/or the quality of services they provide (MLS®, Multiple Listing Service®)

Listing information last updated on May 24th, 2025 at 11:17pm MDT