

\$350,000 - 14144 26 Street, Edmonton

MLS® #E4438003

\$350,000

4 Bedroom, 1.50 Bathroom, 1,196 sqft

Single Family on 0.00 Acres

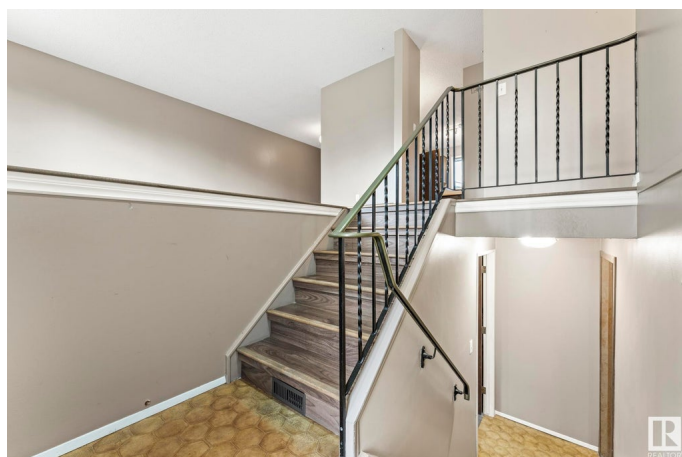
Bannerman, Edmonton, AB

Opportunity Knocks in Bannerman! This 3-bedroom, 1.5-bath bi-level is your chance to own a single-family home at an affordable price point. Located in a quiet, family-friendly community, the layout offers great potential for those looking to build equity with a few updates. Highlights include a double detached garage, newer fridge, and recently replaced furnace and hot water tank—big-ticket items already handled. The bright bi-level design offers functional space on both levels, and there's great potential to develop a legal basement suite, adding future value and flexibility. Though the home maintains its original finishes, the structure is solid and the location is unbeatable—just steps from schools, parks, and shopping. A fantastic opportunity for first-time buyers, renovators, or investors. Bring your vision and unlock the potential!

Built in 1978

Essential Information

MLS® #	E4438003
Price	\$350,000
Bedrooms	4
Bathrooms	1.50
Full Baths	1
Half Baths	1



Square Footage	1,196
Acres	0.00
Year Built	1978
Type	Single Family
Sub-Type	Detached Single Family
Style	Bi-Level
Status	Active

Community Information

Address	14144 26 Street
Area	Edmonton
Subdivision	Bannerman
City	Edmonton
County	ALBERTA
Province	AB
Postal Code	T5Y 1G9

Amenities

Amenities	Hot Water Natural Gas
Parking	Double Garage Detached

Interior

Interior Features	ensuite bathroom
Appliances	Garage Opener, Hood Fan, Refrigerator, Stove-Electric, Dryer-Two, Washers-Two
Heating	Forced Air-1, Natural Gas
Stories	1
Has Basement	Yes
Basement	Full, Partially Finished

Exterior

Exterior	Wood, Stucco
Exterior Features	Back Lane, Cul-De-Sac, Flat Site, Landscaped, Schools, Shopping Nearby, Partially Fenced
Roof	Asphalt Shingles
Construction	Wood, Stucco
Foundation	Concrete Perimeter

Additional Information

Date Listed May 22nd, 2025

Days on Market 18

Zoning Zone 35

DATA IS DEEMED RELIABLE BUT IS NOT GUARANTEED ACCURATE BY THE REALTORS® ASSOCIATION OF EDMONTON. COPYRIGHT 2025 BY THE REALTORS® ASSOCIATION OF EDMONTON. ALL RIGHTS RESERVED. Trademarks are owned or controlled by the Canadian Real Estate Association (CREA) and identify real estate professionals who are members of CREA (REALTOR®, REALTORS®) and/or the quality of services they provide (MLS®, Multiple Listing Service®)

Listing information last updated on June 9th, 2025 at 1:02am MDT