

\$698,800 - 353 Cowan Crescent, Sherwood Park

MLS® #E4438112

\$698,800

3 Bedroom, 3.50 Bathroom, 2,085 sqft

Single Family on 0.00 Acres

Lakeland Ridge, Sherwood Park, AB

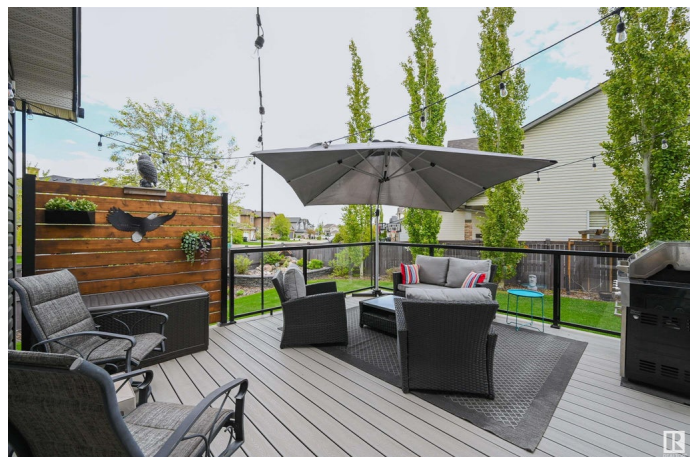
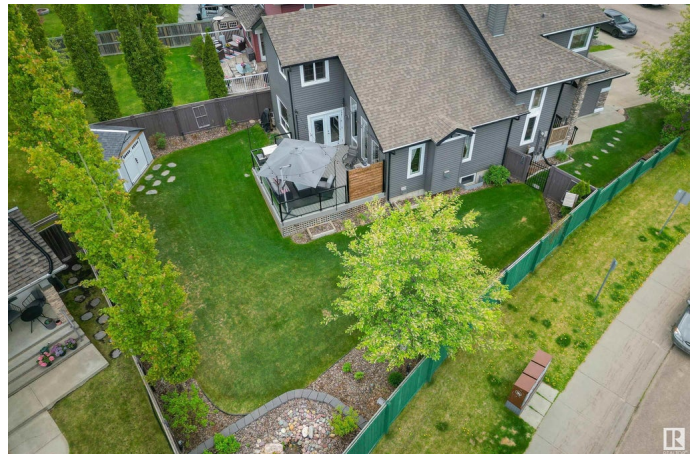
Welcome home to this GORGEOUS UPGRADED, meticulous home on a large CORNER LOT in the heart of LAKELAND RIDGE conveniently located close to schools, parks & walking paths. The main floor features a spacious entrance leading to an open concept main floor plan with VAULTED CEILINGS in the living room & a corner gas fireplace with stone accents. The gourmet kitchen has espresso color cabinetry with lots of storage, granite counters, eating bar, S/S appliances & pantry. Good size dining room that leads out to the deck. To complete the main floor there is a den, laundry room, 2 piece bathroom & gleaming hardwood & tile flooring. Upstairs there are 2 bedrooms, a 4 piece bathroom & the primary suite with a walk-in closet & a spa-like ensuite with a jacuzzi tub, walk-in shower & heated tile floors. The fully finished basement has a family room with a gas fireplace w stone accents, a games room with a wet bar & a 3 piece bathroom. Gorgeous fenced yard with a water feature. Heated garage. Shows very well!

Built in 2007

Essential Information

MLS® # E4438112

Price \$698,800



Bedrooms	3
Bathrooms	3.50
Full Baths	3
Half Baths	1
Square Footage	2,085
Acres	0.00
Year Built	2007
Type	Single Family
Sub-Type	Detached Single Family
Style	2 Storey
Status	Active

Community Information

Address	353 Cowan Crescent
Area	Sherwood Park
Subdivision	Lakeland Ridge
City	Sherwood Park
County	ALBERTA
Province	AB
Postal Code	T8H 0E6

Amenities

Amenities	Air Conditioner, Deck, Vaulted Ceiling, Wet Bar, 9 ft. Basement Ceiling
Parking Spaces	4
Parking	Double Garage Attached

Interior

Interior Features	ensuite bathroom
Appliances	Air Conditioning-Central, Dishwasher-Built-In, Dryer, Hood Fan, Refrigerator, Storage Shed, Stove-Electric, Washer, Window Coverings
Heating	Forced Air-1, Natural Gas
Fireplace	Yes
Fireplaces	Mantel, Stone Facing
Stories	3
Has Basement	Yes
Basement	Full, Finished

Exterior

Exterior	Wood, Stone, Vinyl
----------	--------------------

Exterior Features	Corner Lot, Fenced, Landscaped, Playground Nearby, Schools, Shopping Nearby
Roof	Asphalt Shingles
Construction	Wood, Stone, Vinyl
Foundation	Concrete Perimeter

School Information

Elementary	Lakeland Ridge
Middle	Lakeland Ridge
High	Salisbury Composite

Additional Information

Date Listed	May 23rd, 2025
Days on Market	2
Zoning	Zone 25

DATA IS DEEMED RELIABLE BUT IS NOT GUARANTEED ACCURATE BY THE REALTORS® ASSOCIATION OF EDMONTON. COPYRIGHT 2025 BY THE REALTORS® ASSOCIATION OF EDMONTON. ALL RIGHTS RESERVED.Trademarks are owned or controlled by the Canadian Real Estate Association (CREA) and identify real estate professionals who are members of CREA (REALTOR®, REALTORS®) and/or the quality of services they provide (MLS®, Multiple Listing Service®)

Listing information last updated on May 25th, 2025 at 4:47pm MDT