

## \$669,900 - 342 Juniper Cove, Leduc

MLS® #E4438226

**\$669,900**

3 Bedroom, 2.50 Bathroom, 2,050 sqft

Single Family on 0.00 Acres

Woodbend, Leduc, AB

Bedrock Homes beautiful and stylish show home in Woodbend Leduc. backing onto walking / greenway with backyard developer fence along the walkway. Photos are representative.

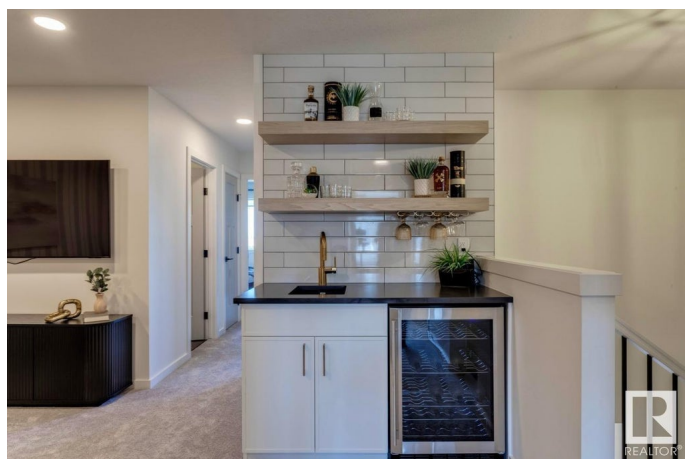
Built in 2024

### Essential Information

|                |                        |
|----------------|------------------------|
| MLS® #         | E4438226               |
| Price          | \$669,900              |
| Bedrooms       | 3                      |
| Bathrooms      | 2.50                   |
| Full Baths     | 2                      |
| Half Baths     | 1                      |
| Square Footage | 2,050                  |
| Acres          | 0.00                   |
| Year Built     | 2024                   |
| Type           | Single Family          |
| Sub-Type       | Detached Single Family |
| Style          | 2 Storey               |
| Status         | Active                 |

### Community Information

|             |                  |
|-------------|------------------|
| Address     | 342 Juniper Cove |
| Area        | Leduc            |
| Subdivision | Woodbend         |
| City        | Leduc            |



|             |         |
|-------------|---------|
| County      | ALBERTA |
| Province    | AB      |
| Postal Code | T9E 1S5 |

### Amenities

|                |   |
|----------------|---|
| Amenities      | Smart/Program. Thermostat, Wet Bar, See Remarks |
| Parking Spaces | 4   |
| Parking        | Double Garage Attached                          |

### Interior

|                   |  |
|-------------------|--|
| Interior Features | ensuite bathroom   |
| Appliances        | Dishwasher-Built-In, Dryer, Hood Fan, Oven-Microwave, Refrigerator, Stove-Electric, Washer, Window Coverings |
| Heating           | Forced Air-1, Natural Gas  |
| Fireplace         | Yes  |
| Fireplaces        | Mantel   |
| Stories           | 2  |
| Has Basement      | Yes  |
| Basement          | Full, Finished   |

### Exterior

|                   |  |
|-------------------|--|
| Exterior          | Wood, Fiber Cement, Stone, Vinyl   |
| Exterior Features | Airport Nearby, Backs Onto Park/Trees, Golf Nearby, Landscaped, Park/Reserve, Playground Nearby, Public Swimming Pool, Public Transportation, Schools, Shopping Nearby |
| Roof              | Asphalt Shingles   |
| Construction      | Wood, Fiber Cement, Stone, Vinyl   |
| Foundation        | Concrete Perimeter   |

### Additional Information

|                |                |
|----------------|----------------|
| Date Listed    | May 23rd, 2025 |
| Days on Market | 14             |
| Zoning         | Zone 81        |

DATA IS DEEMED RELIABLE BUT IS NOT GUARANTEED ACCURATE BY THE REALTORS® ASSOCIATION OF EDMONTON. COPYRIGHT 2025 BY THE REALTORS® ASSOCIATION OF EDMONTON. ALL RIGHTS RESERVED. Trademarks are owned or controlled by the Canadian Real Estate Association (CREA) and identify real estate professionals who are members of CREA (REALTOR®, REALTORS®) and/or the quality of services they provide (MLS®, Multiple Listing Service®)

Listing information last updated on June 6th, 2025 at 4:02pm MDT