

\$479,900 - 7635 182 Avenue, Edmonton

MLS® #E4438530

\$479,900

3 Bedroom, 2.50 Bathroom, 1,524 sqft

Single Family on 0.00 Acres

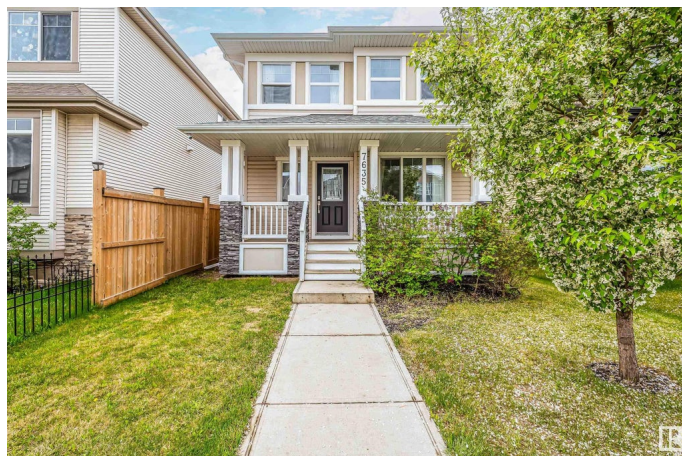
Crystallina Nera West, Edmonton, AB

Welcome to this beautiful family home in desirable Crystallina Nera! With over 1,500 sq ft of living space, this home offers a charming front veranda, a welcoming entry with a den, and a convenient 2-piece bath. The kitchen features quartz countertops, espresso cabinets, pendant lighting, stainless steel appliances, and a pantry, flowing into a spacious dining room with a pass-through archway to the cozy living room. Laminate flooring runs throughout the main floor. The rear entry leads to a deck, fenced yard, and an insulated double-detached garage. Upstairs, enjoy a generous primary suite with a luxurious 5-piece ensuite, plus two more bedrooms, a 4-piece bath, and upstairs laundry. The full unfinished basement offers tons of potential for future development. Located steps from a lake, trails, shopping, and schools—this is the perfect family home in a wonderful neighbourhood!

Built in 2014

Essential Information

MLS® #	E4438530
Price	\$479,900
Bedrooms	3
Bathrooms	2.50
Full Baths	2



Half Baths	1
Square Footage	1,524
Acres	0.00
Year Built	2014
Type	Single Family
Sub-Type	Detached Single Family
Style	2 Storey
Status	Active

Community Information

Address	7635 182 Avenue
Area	Edmonton
Subdivision	Crystallina Nera West
City	Edmonton
County	ALBERTA
Province	AB
Postal Code	T5Z 0M1

Amenities

Amenities	Deck, Front Porch
Parking	Double Garage Detached

Interior

Interior Features	ensuite bathroom
Appliances	Alarm/Security System, Dishwasher-Built-In, Garage Control, Garage Opener, Microwave Hood Fan, Refrigerator, Stacked Washer/Dryer, Stove-Electric
Heating	Forced Air-1, Natural Gas
Stories	2
Has Basement	Yes
Basement	Full, Unfinished

Exterior

Exterior	Wood, Vinyl
Exterior Features	Back Lane, Fenced, Flat Site, Landscaped, Park/Reserve, Picnic Area, Playground Nearby, Public Transportation, Schools, Shopping Nearby, See Remarks
Roof	Asphalt Shingles
Construction	Wood, Vinyl

Foundation Concrete Perimeter

Additional Information

Date Listed May 26th, 2025

Days on Market 13

Zoning Zone 28

DATA IS DEEMED RELIABLE BUT IS NOT GUARANTEED ACCURATE BY THE REALTORS® ASSOCIATION OF EDMONTON. COPYRIGHT 2025 BY THE REALTORS® ASSOCIATION OF EDMONTON. ALL RIGHTS RESERVED.Trademarks are owned or controlled by the Canadian Real Estate Association (CREA) and identify real estate professionals who are members of CREA (REALTOR®, REALTORS®) and/or the quality of services they provide (MLS®, Multiple Listing Service®)

Listing information last updated on June 8th, 2025 at 9:02pm MDT