

# \$188,000 - 402 11020 19 Avenue, Edmonton

MLS® #E4440066

**\$188,000**

2 Bedroom, 2.00 Bathroom, 1,130 sqft

Condo / Townhouse on 0.00 Acres

Keheewin, Edmonton, AB

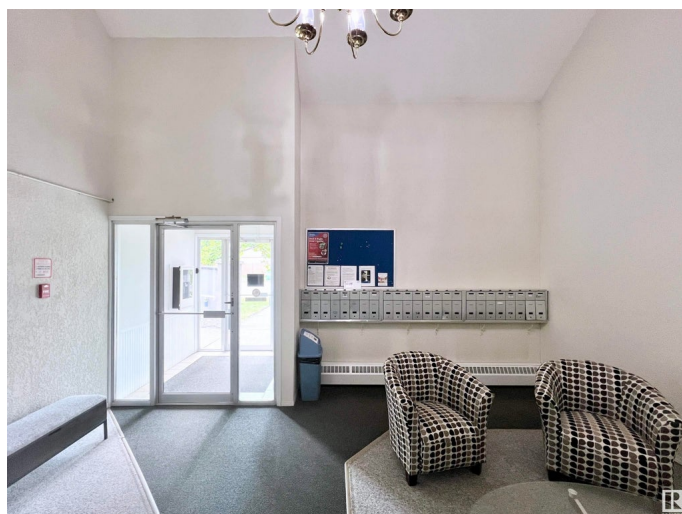
Welcome to Kaskitayo Place in Keheewin!

This spacious 1,130 sqft, 2-bedrm, 2-bathrm on top-floor condo with private patio is situated in a well-maintained, professionally managed 18+ adult building. â€¢ Bright & inviting living room with a cozy corner wood-burning fireplace. â€¢ Functional kitchen - abundant cabinetry and ample counter space. â€¢ Spacious dining area - adjacent to the kitchen â€¢ Generous primary bedroom - featuring a 4-piece ensuite and double closets â€¢ West-facing balcony â€” perfect for relaxing sunsets â€¢ In-suite laundry - large storage room, and \*\*additional storage locker on main floor â€¢ 1 assigned parking carport â€¢ Prime Location - Steps away from schools, parks, YMCA, 7-11, Century Park LRT, and scenic Blackmud Creek Ravine â€¢ Easy access to walking trails, and the Anthony Henday for quick commutes. â€¢ Surrounded by greenery yet close to all amenities â€” your perfect balance of nature and city living!

Built in 1989

## Essential Information

MLS® #	E4440066
Price	\$188,000
Bedrooms	2
Bathrooms	2.00



Full Baths	2
Square Footage	1,130
Acres	0.00
Year Built	1989
Type	Condo / Townhouse
Sub-Type	Lowrise Apartment
Style	Single Level Apartment
Status	Active

### Community Information

Address	402 11020 19 Avenue
Area	Edmonton
Subdivision	Keheewin
City	Edmonton
County	ALBERTA
Province	AB
Postal Code	T6J 9P5

### Amenities

Amenities	Patio, Tennis Courts, Storage Cage, Rooftop Deck/Patio
Parking Spaces	1
Parking	Single Carport

### Interior

Interior Features	ensuite bathroom
Appliances	Dishwasher-Built-In, Dryer, Hood Fan, Refrigerator, Stove-Electric, Washer, Window Coverings
Heating	Baseboard, Hot Water, Natural Gas
# of Stories	4
Stories	1
Has Basement	Yes
Basement	None, No Basement

### Exterior

Exterior	Wood, Stucco
Exterior Features	Backs Onto Park/Trees, Flat Site, Golf Nearby, Playground Nearby, Public Swimming Pool, Public Transportation, Schools, Shopping Nearby, See Remarks
Roof	Asphalt Shingles

Construction	Wood, Stucco
Foundation	Concrete Perimeter

**Additional Information**

Date Listed	June 3rd, 2025
Days on Market	45
Zoning	Zone 16
Condo Fee	\$631

DATA IS DEEMED RELIABLE BUT IS NOT GUARANTEED ACCURATE BY THE REALTORS® ASSOCIATION OF EDMONTON. COPYRIGHT 2025 BY THE REALTORS® ASSOCIATION OF EDMONTON. ALL RIGHTS RESERVED.Trademarks are owned or controlled by the Canadian Real Estate Association (CREA) and identify real estate professionals who are members of CREA (REALTOR®, REALTORS®) and/or the quality of services they provide (MLS®, Multiple Listing Service®)

Listing information last updated on July 18th, 2025 at 10:47am MDT