

\$344,900 - 57 12815 Cumberland Road, Edmonton

MLS® #E4442029

\$344,900

3 Bedroom, 2.50 Bathroom, 1,534 sqft
Condo / Townhouse on 0.00 Acres

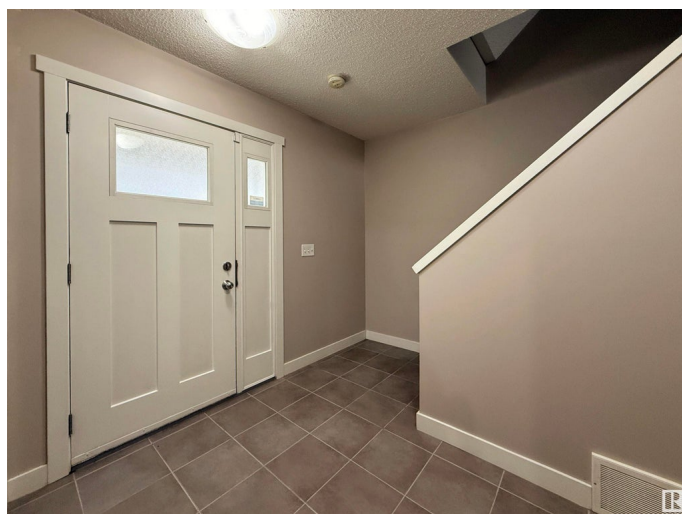
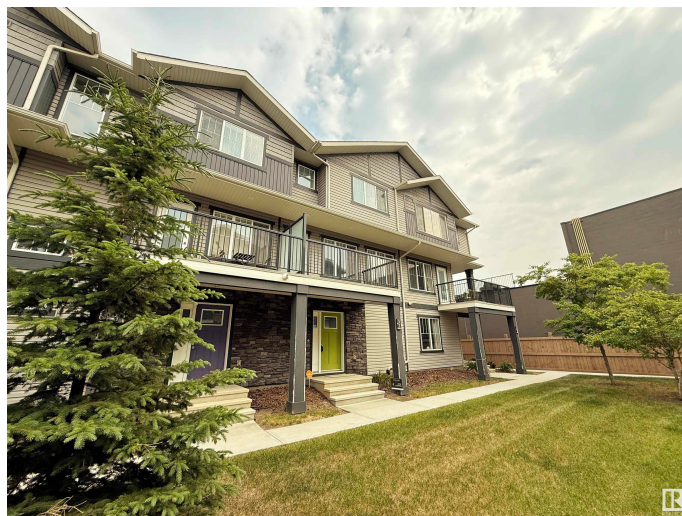
Pembina, Edmonton, AB

Welcome home to this immaculately maintained 3 bedroom townhome with **DOUBLE CAR GARAGE** offering low-maintenance living in a fantastic location. The main level features a U-shaped kitchen with granite countertops, stainless steel appliances, and corner pantry space. Open-concept living and dining areas make it ideal for both everyday living and entertaining. The ground floor entry from the double attached garage includes a large closet and versatile storage space. Upstairs, youâ€™™ll find 3 comfortable bedrooms (including primary retreat with ensuite & good-sized closet) and an additional full bathroom. Located close to shopping, dining, and transit, this home offers convenience and lifestyle. Immediate possession available â€“ move in and enjoy!

Built in 2016

Essential Information

| | |
|----------------|-----------|
| MLS® # | E4442029 |
| Price | \$344,900 |
| Bedrooms | 3 |
| Bathrooms | 2.50 |
| Full Baths | 2 |
| Half Baths | 1 |
| Square Footage | 1,534 |



| | |
|------------|-------------------|
| Acres | 0.00 |
| Year Built | 2016 |
| Type | Condo / Townhouse |
| Sub-Type | Townhouse |
| Style | 3 Storey |
| Status | Active |

Community Information

| | |
|-------------|--------------------------|
| Address | 57 12815 Cumberland Road |
| Area | Edmonton |
| Subdivision | Pembina |
| City | Edmonton |
| County | ALBERTA |
| Province | AB |
| Postal Code | T6V 0M2 |

Amenities

| | |
|-----------|--|
| Amenities | Carbon Monoxide Detectors, Deck, Detectors Smoke, Exterior Walls-2"x6", Parking-Visitor, Vinyl Windows |
| Parking | Double Garage Attached |

Interior

| | |
|-------------------|---|
| Interior Features | ensuite bathroom |
| Appliances | Dishwasher-Built-In, Dryer, Garage Opener, Microwave Hood Fan, Refrigerator, Stove-Electric, Washer |
| Heating | Forced Air-1, Natural Gas |
| Stories | 3 |
| Has Basement | Yes |
| Basement | None, No Basement |

Exterior

| | |
|-------------------|--|
| Exterior | Wood, Vinyl |
| Exterior Features | Flat Site, Fruit Trees/Shrubs, Landscaped, Playground Nearby, Public Transportation, Shopping Nearby |
| Roof | Asphalt Shingles |
| Construction | Wood, Vinyl |
| Foundation | Concrete Perimeter |

Additional Information

| | |
|-------------|-----------------|
| Date Listed | June 12th, 2025 |
|-------------|-----------------|

| | |
|----------------|---------|
| Days on Market | 11 |
| Zoning | Zone 27 |
| Condo Fee | \$239 |

DATA IS DEEMED RELIABLE BUT IS NOT GUARANTEED ACCURATE BY THE REALTORS® ASSOCIATION OF EDMONTON. COPYRIGHT 2025 BY THE REALTORS® ASSOCIATION OF EDMONTON. ALL RIGHTS RESERVED. Trademarks are owned or controlled by the Canadian Real Estate Association (CREA) and identify real estate professionals who are members of CREA (REALTOR®, REALTORS®) and/or the quality of services they provide (MLS®, Multiple Listing Service®)

Listing information last updated on June 23rd, 2025 at 4:47am MDT