

\$218,000 - 307 8715 82 Avenue, Edmonton

MLS® #E4444116

\$218,000

2 Bedroom, 2.00 Bathroom, 1,070 sqft

Condo / Townhouse on 0.00 Acres

King Edward Park, Edmonton, AB

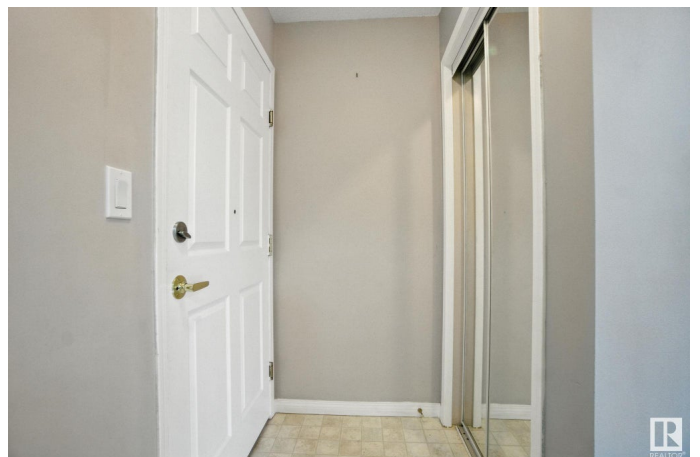
Exceptionally well maintained 40+ building in King Edward Park! This 1070 sq.ft. corner unit has 2 large bedrooms, 2 bathrooms and in suite laundry! Primary bedroom large enough for a king size bed has his and her closets and a 3 piece en suite bathroom. The second large bedroom has direct access to the full 4 piece bathroom. Nice sized living room has a cozy gas fireplace (inspected by ATCO 2024) with mantle. Open concept kitchen with loads of cupboard space and a pantry! Built in dishwasher (2024). Laminate flooring throughout (with a box of spare pieces). Door to your private corner patio has gas bbq hookup. In suite laundry room has a linen closet and newer Washer and dryer (2023). Heated underground parking and storage cage! Amenities include 2 social rooms and a large south facing deck. Guest suite for those out of town guests. Short walk to Bonnie Doon Mall, Safeway and Mill Creek Ravine. Minutes to the U of A or downtown. Condo fee includes HEAT & WATER! SMALL PETS allowed with board approval.

Built in 2000

Essential Information

MLS® # E4444116

Price \$218,000



| | |
|----------------|------------------------|
| Bedrooms | 2 |
| Bathrooms | 2.00 |
| Full Baths | 2 |
| Square Footage | 1,070 |
| Acres | 0.00 |
| Year Built | 2000 |
| Type | Condo / Townhouse |
| Sub-Type | Lowrise Apartment |
| Style | Single Level Apartment |
| Status | Active |

Community Information

| | |
|-------------|--------------------|
| Address | 307 8715 82 Avenue |
| Area | Edmonton |
| Subdivision | King Edward Park |
| City | Edmonton |
| County | ALBERTA |
| Province | AB |
| Postal Code | T6C 4R6 |

Amenities

| | |
|-----------|---|
| Amenities | Deck, Detectors Smoke, Guest Suite, Intercom, No Smoking Home, Parking-Visitor, Party Room, Patio, Secured Parking, Social Rooms, Vinyl Windows, Storage Cage, Natural Gas BBQ Hookup |
| Parking | Heated, Stall, Underground |

Interior

| | |
|-------------------|---|
| Interior Features | ensuite bathroom |
| Appliances | Dishwasher-Built-In, Microwave Hood Fan, Refrigerator, Stacked Washer/Dryer, Stove-Electric, Window Coverings |
| Heating | Forced Air-1, Natural Gas |
| Fireplace | Yes |
| Fireplaces | Corner, Mantel |
| # of Stories | 4 |
| Stories | 4 |
| Has Basement | Yes |
| Basement | None, No Basement |

Exterior

| | |
|-------------------|--|
| Exterior | Wood, Vinyl |
| Exterior Features | Back Lane, Flat Site, Golf Nearby, Landscaped, Public Transportation, Recreation Use, Shopping Nearby, Ski Hill Nearby |
| Roof | Asphalt Shingles |
| Construction | Wood, Vinyl |
| Foundation | Concrete Perimeter |

Additional Information

| | |
|----------------|-----------------|
| Date Listed | June 24th, 2025 |
| Days on Market | 31 |
| Zoning | Zone 17 |
| Condo Fee | \$669 |

DATA IS DEEMED RELIABLE BUT IS NOT GUARANTEED ACCURATE BY THE REALTORS® ASSOCIATION OF EDMONTON. COPYRIGHT 2025 BY THE REALTORS® ASSOCIATION OF EDMONTON. ALL RIGHTS RESERVED. Trademarks are owned or controlled by the Canadian Real Estate Association (CREA) and identify real estate professionals who are members of CREA (REALTOR®, REALTORS®) and/or the quality of services they provide (MLS®, Multiple Listing Service®)

Listing information last updated on July 25th, 2025 at 10:33am MDT