

\$434,400 - 15732 107a Avenue, Edmonton

MLS® #E4444251

\$434,400

3 Bedroom, 2.00 Bathroom, 1,055 sqft
Single Family on 0.00 Acres

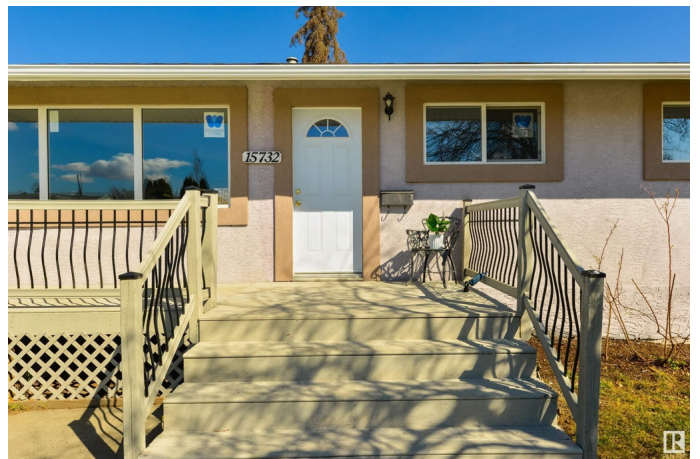
Mayfield, Edmonton, AB

This professionally renovated 3 bed 2 bath bungalow. this lovely property boast a modern layout with a spacious family room offering laminate flooring large picture window overlooking the sunny south facing front Deck. the newly installed kitchen offers tons of cabinets with a large pantry and brand new SS APPLIANCES. Main floor patio doors of the kitchen leads to the large back Deck. The primary bedroom boasts a large walk -in closet. second bedroom is of an ideal size. The basement has a newly renovated large family room offering laminate floors , third spacious bedroom, and a newer three pcs bath. large storage area in the nicely laid out utility room. Oversized double garage and a cement parking pad ideal for an RV storage. upgrades include newer house shingles facia ,Doors ,Windows, high end laminate throughout house & basement , brand new Stainless steel ,new 50 gallon hot water tank, upgraded power panel .

Built in 1958

Essential Information

| | |
|-----------|-----------|
| MLS® # | E4444251 |
| Price | \$434,400 |
| Bedrooms | 3 |
| Bathrooms | 2.00 |



| | |
|----------------|------------------------|
| Full Baths | 2 |
| Square Footage | 1,055 |
| Acres | 0.00 |
| Year Built | 1958 |
| Type | Single Family |
| Sub-Type | Detached Single Family |
| Style | Bungalow |
| Status | Active |

Community Information

| | |
|-------------|-------------------|
| Address | 15732 107a Avenue |
| Area | Edmonton |
| Subdivision | Mayfield |
| City | Edmonton |
| County | ALBERTA |
| Province | AB |
| Postal Code | T5P 0Z1 |

Amenities

| | |
|-----------|--|
| Amenities | Deck, Detectors Smoke, See Remarks |
| Parking | Double Garage Detached, Over Sized, Parking Pad Cement/Paved |

Interior

| | |
|--------------|--|
| Appliances | Dishwasher-Built-In, Dryer, Refrigerator, Stove-Electric, Washer |
| Heating | Forced Air-1, Natural Gas |
| Stories | 2 |
| Has Basement | Yes |
| Basement | Full, Finished |

Exterior

| | |
|-------------------|--|
| Exterior | Wood, Stucco |
| Exterior Features | Back Lane, Landscaped, Picnic Area, Public Swimming Pool, Public Transportation, Schools, Shopping Nearby, See Remarks |
| Roof | Asphalt Shingles |
| Construction | Wood, Stucco |
| Foundation | Concrete Perimeter |

School Information

| | |
|------------|--------------------|
| Elementary | MAYFILED ,BRITANIA |
|------------|--------------------|

| | |
|--------|----------------------|
| Middle | MAYFIELD JUNIOR HIGH |
| High | ROSS SHEPPARD |

Additional Information

| | |
|----------------|-----------------|
| Date Listed | June 25th, 2025 |
| Days on Market | 19 |
| Zoning | Zone 21 |

DATA IS DEEMED RELIABLE BUT IS NOT GUARANTEED ACCURATE BY THE REALTORS® ASSOCIATION OF EDMONTON. COPYRIGHT 2025 BY THE REALTORS® ASSOCIATION OF EDMONTON. ALL RIGHTS RESERVED. Trademarks are owned or controlled by the Canadian Real Estate Association (CREA) and identify real estate professionals who are members of CREA (REALTOR®, REALTORS®) and/or the quality of services they provide (MLS®, Multiple Listing Service®)

Listing information last updated on July 14th, 2025 at 5:02pm MDT