

# \$249,000 - 406 10135 Saskatchewan Drive, Edmonton

MLS® #E4445212

**\$249,000**

2 Bedroom, 1.50 Bathroom, 1,084 sqft

Condo / Townhouse on 0.00 Acres

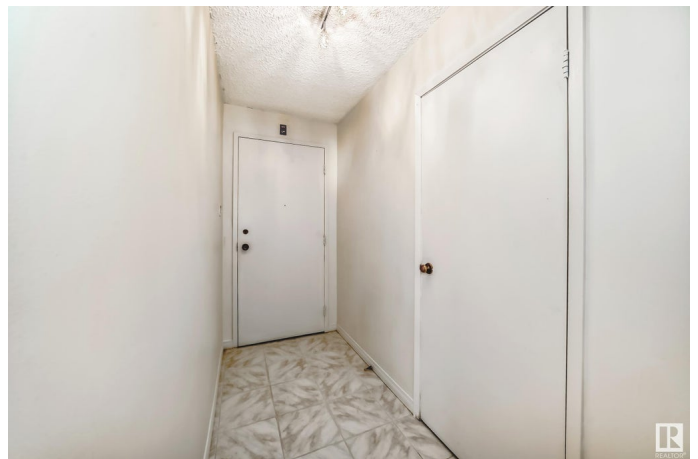
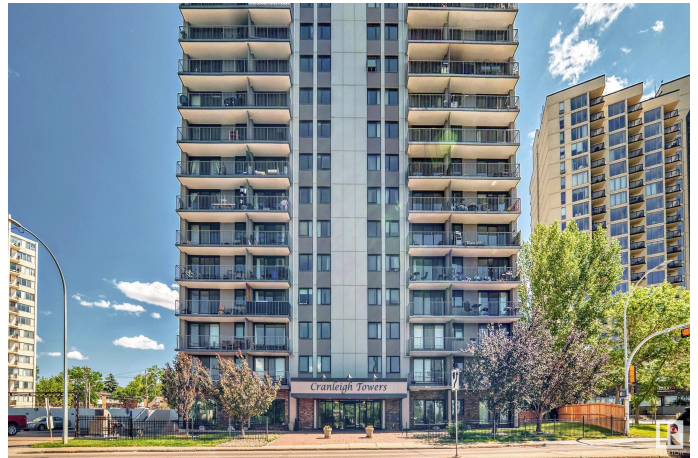
Strathcona, Edmonton, AB

Enjoy stunning river valley and city skyline views from this upgraded 2-bedroom, 2-bath. The open-concept layout perfect for everyday living and entertaining. Step out to a spacious balcony to take in the views. The bright living and dining areas are warm and inviting. The primary bedroom offer a private 2-piece ensuite, while the second bedroom is ideal for guests or a home office. A 4-piece main bath and in-suite laundry add convenience. Includes titled underground parking. Building upgrades include new balcony doors, windows, and fresh exterior paint. Enjoy access to a pool, fitness room, and sauna. Located minutes from the University of Alberta, Whyte Avenue, downtown, and river valley trails—this is the best of city living!

Built in 1973

## Essential Information

MLS® #	E4445212
Price	\$249,000
Bedrooms	2
Bathrooms	1.50
Full Baths	1
Half Baths	1
Square Footage	1,084
Acres	0.00



Year Built	1973
Type	Condo / Townhouse
Sub-Type	Apartment High Rise
Style	Single Level Apartment
Status	Active

### Community Information

Address	406 10135 Saskatchewan Drive
Area	Edmonton
Subdivision	Strathcona
City	Edmonton
County	ALBERTA
Province	AB
Postal Code	T6E 4Y9

### Amenities

Amenities	Exercise Room, Parking-Visitor, Pool-Indoor, Secured Parking, Security Door, Tennis Courts
Parking Spaces	1
Parking	Parkade, Single Indoor, Underground
Has Pool	Yes

### Interior

Interior Features	ensuite bathroom
Appliances	Dishwasher-Built-In, Dryer, Intercom, Refrigerator, Stove-Electric, Washer, Window Coverings, Curtains and Blinds
Heating	Hot Water, Natural Gas
# of Stories	20
Stories	1
Has Basement	Yes
Basement	None, No Basement

### Exterior

Exterior	Steel, Concrete
Exterior Features	Corner Lot, Park/Reserve, Private Setting, Public Transportation, Ravine View, Schools, Shopping Nearby
Roof	Tar & Gravel
Construction	Steel, Concrete
Foundation	Concrete Perimeter

**School Information**

Elementary	King Edward
Middle	McKernan Junior High
High	Strathcona High

**Additional Information**

Date Listed	July 1st, 2025
Days on Market	60
Zoning	Zone 15
Condo Fee	\$778

DATA IS DEEMED RELIABLE BUT IS NOT GUARANTEED ACCURATE BY THE REALTORS® ASSOCIATION OF EDMONTON. COPYRIGHT 2025 BY THE REALTORS® ASSOCIATION OF EDMONTON. ALL RIGHTS RESERVED.Trademarks are owned or controlled by the Canadian Real Estate Association (CREA) and identify real estate professionals who are members of CREA (REALTOR®, REALTORS®) and/or the quality of services they provide (MLS®, Multiple Listing Service®)

Listing information last updated on August 30th, 2025 at 1:32pm MDT