

\$820,000 - 6724 12 Avenue, Edmonton

MLS® #E4445999

\$820,000

7 Bedroom, 4.00 Bathroom, 2,887 sqft

Single Family on 0.00 Acres

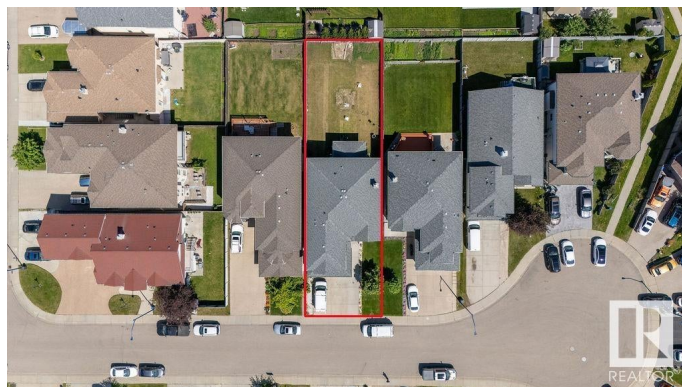
Summerside, Edmonton, AB

Welcome to your dream home in Summerside! This stunning 2,887 sq ft (above grade) custom-built gem offers 5 spacious bedrooms, including a main-floor bedroom & office—perfect for multi-generational living or working from home. The elegant main floor features formal living & family rooms, a bright dining area, and a chef's kitchen with generous prep space. Upstairs, retreat to a luxurious primary suite with a spa-inspired 5-piece ensuite, plus three more bedrooms, a versatile loft, and another full bath. Adding incredible value, this home also features a fully finished 2-bedroom basement with a separate side entrance—ideal for extended family, guests, or future rental potential. Enjoy the convenience of an oversized double garage, and over 2,887 sq ft of thoughtfully designed living space. Located on a quiet street close to parks, schools, and shopping. Move-in ready and perfect for your growing family—don't miss out!

Built in 2006

Essential Information

MLS® #	E4445999
Price	\$820,000
Bedrooms	7
Bathrooms	4.00



Full Baths	4
Square Footage	2,887
Acres	0.00
Year Built	2006
Type	Single Family
Sub-Type	Detached Single Family
Style	2 Storey
Status	Active

Community Information

Address	6724 12 Avenue
Area	Edmonton
Subdivision	Summerside
City	Edmonton
County	ALBERTA
Province	AB
Postal Code	T6X 1L2

Amenities

Amenities	Ceiling 9 ft., Deck, Detectors Smoke, Hot Water Electric, No Animal Home, No Smoking Home, See Remarks, Natural Gas Stove Hookup
Parking	Double Garage Attached

Interior

Interior Features	ensuite bathroom
Appliances	Dryer, Fan-Ceiling, Stove-Electric, Stove-Gas, Washer, Window Coverings, Refrigerators-Two, Microwave Hood Fan-Two
Heating	Forced Air-1, Forced Air-2, Natural Gas
Stories	3
Has Basement	Yes
Basement	Full, Finished

Exterior

Exterior	Wood, Stucco
Exterior Features	Beach Access, Fenced, Landscaped, Playground Nearby, Public Transportation, Schools, Shopping Nearby, See Remarks
Roof	Asphalt Shingles
Construction	Wood, Stucco
Foundation	Concrete Perimeter

Additional Information

Date Listed July 4th, 2025
Days on Market 16
Zoning Zone 53

DATA IS DEEMED RELIABLE BUT IS NOT GUARANTEED ACCURATE BY THE REALTORS® ASSOCIATION OF EDMONTON. COPYRIGHT 2025 BY THE REALTORS® ASSOCIATION OF EDMONTON. ALL RIGHTS RESERVED.Trademarks are owned or controlled by the Canadian Real Estate Association (CREA) and identify real estate professionals who are members of CREA (REALTOR®, REALTORS®) and/or the quality of services they provide (MLS®, Multiple Listing Service®)
Listing information last updated on July 20th, 2025 at 6:32am MDT