

\$355,000 - 4 1730 Leger Gate Gate, Edmonton

MLS® #E4446107

\$355,000

3 Bedroom, 2.50 Bathroom, 1,215 sqft

Condo / Townhouse on 0.00 Acres

Leger, Edmonton, AB

STYLE, SPACE & LOCATION IN LEGER!

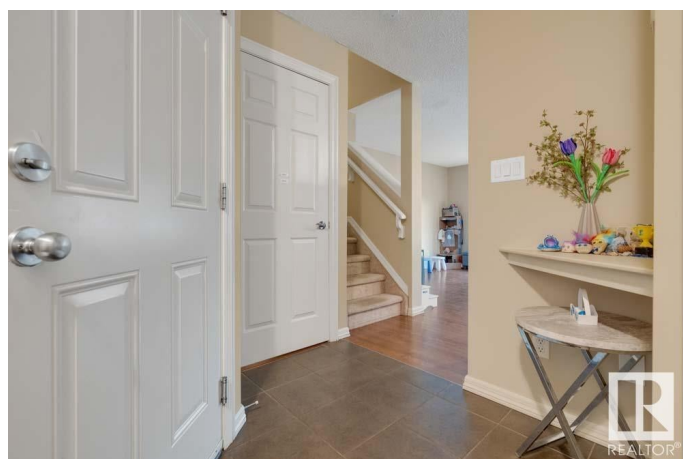
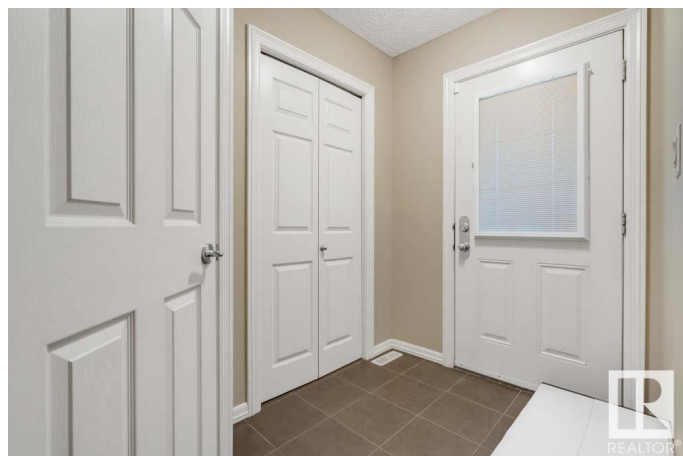
Tucked into the sought-after Westhill on Whitemud Oaks community, this well-kept 2-STOREY HALF-DUPLEX delivers comfort and convenience in one of Edmonton's best-connected neighbourhoods. The main floor features an OPEN-CONCEPT layout with hardwood floors, a spacious dining area, and a modern kitchen with MAPLE CABINETS, GRANITE ISLAND, SLEEK BLACK APPLIANCES, and tile backsplash. You'll also find a handy 2PC BATH and access to the ATTACHED SINGLE GARAGE. Step through sliding patio doors to your PRIVATE, FULLY FENCED YARD with DECK—perfect for relaxing or entertaining. CENTRAL A/C keeps the home cool and comfortable all summer long. Upstairs, enjoy 3 LARGE BEDROOMS including a primary with 3PC ENSUITE and WALK-IN CLOSET. The wide open, UNFINISHED BASEMENT is ready for your ideas. LOW-MAINTENANCE LIVING in a quiet, well-managed complex close to Terwillegar Rec Centre, schools, shopping, transit and all amenities.

Built in 2009

Essential Information

MLS® # E4446107

Price \$355,000



Bedrooms	3
Bathrooms	2.50
Full Baths	2
Half Baths	1
Square Footage	1,215
Acres	0.00
Year Built	2009
Type	Condo / Townhouse
Sub-Type	Half Duplex
Style	2 Storey
Status	Active

Community Information

Address	4 1730 Leger Gate Gate
Area	Edmonton
Subdivision	Leger
City	Edmonton
County	ALBERTA
Province	AB
Postal Code	T6R 0R3

Amenities

Amenities	Air Conditioner, Deck
Parking Spaces	2
Parking	Single Garage Attached

Interior

Interior Features	ensuite bathroom
Appliances	Dishwasher-Built-In, Dryer, Garage Control, Garage Opener, Hood Fan, Refrigerator, Stove-Electric, Washer, Window Coverings
Heating	Forced Air-1, Natural Gas
Stories	2
Has Basement	Yes
Basement	Full, Unfinished

Exterior

Exterior	Wood, Stone, Vinyl
Exterior Features	Fenced, Flat Site, Playground Nearby, Public Swimming Pool, Public Transportation, Schools, Shopping Nearby

Roof	Asphalt Shingles
Construction	Wood, Stone, Vinyl
Foundation	Concrete Perimeter

Additional Information

Date Listed	July 5th, 2025
Days on Market	2
Zoning	Zone 14
Condo Fee	\$332

DATA IS DEEMED RELIABLE BUT IS NOT GUARANTEED ACCURATE BY THE REALTORS® ASSOCIATION OF EDMONTON. COPYRIGHT 2025 BY THE REALTORS® ASSOCIATION OF EDMONTON. ALL RIGHTS RESERVED.Trademarks are owned or controlled by the Canadian Real Estate Association (CREA) and identify real estate professionals who are members of CREA (REALTOR®, REALTORS®) and/or the quality of services they provide (MLS®, Multiple Listing Service®)

Listing information last updated on July 7th, 2025 at 2:47am MDT