

\$2,200,000 - 14018 104 Avenue, Edmonton

MLS® #E4446427

\$2,200,000

5 Bedroom, 4.50 Bathroom, 3,086 sqft
Single Family on 0.00 Acres

Glenora, Edmonton, AB

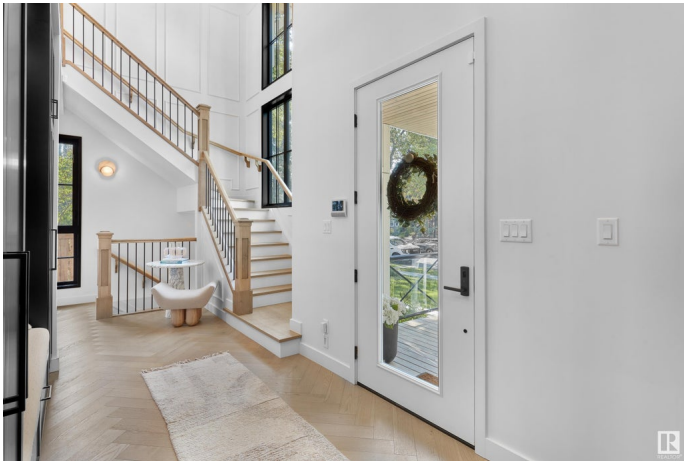
True luxury in Glenora! Just steps to the largest urban park in Canada - the River Valley – this stunning home is perfectly located in the historic community of Glenora.

Encompassing 4458sqft (total developed living space), the home lends itself to entertaining on a grand scale - indoor & outdoor spaces (7500sqft lot) - 10ft ceilings on the main floor - 5 bedrooms, 4.5 bathrooms, main floor office or formal dining room, Butler pantry, oversized triple detached garage & more! Superior engineering, luxury finishings (custom design, ironwork, cabinetry & carpentry throughout), abundance of natural lighting, stunning staircase, floor to ceiling windows offering a seamless flow between outdoor & indoor living, sophisticated primary suite & more indulgences to discover. Top rated schools, play grounds, active community league, caf  s, West Block – the perfect family community!

Built in 2023

Essential Information

MLS® #	E4446427
Price	\$2,200,000
Bedrooms	5
Bathrooms	4.50
Full Baths	4



Half Baths	1
Square Footage	3,086
Acres	0.00
Year Built	2023
Type	Single Family
Sub-Type	Detached Single Family
Style	2 Storey
Status	Active

Community Information

Address	14018 104 Avenue
Area	Edmonton
Subdivision	Glenora
City	Edmonton
County	ALBERTA
Province	AB
Postal Code	T5N 0W6

Amenities

Amenities	Carbon Monoxide Detectors, Closet Organizers, Deck, Detectors Smoke, Insulation-Upgraded, Smart/Program. Thermostat, Vinyl Windows
Parking Spaces	6
Parking	Over Sized, Triple Garage Detached

Interior

Interior Features	ensuite bathroom
Appliances	Dishwasher-Built-In, Dryer, Garage Control, Garage Opener, Humidifier-Power(Furnace), Oven-Microwave, Refrigerator, Stove-Gas
Heating	Forced Air-1, Natural Gas
Fireplace	Yes
Fireplaces	Masonry, See Remarks
Stories	3
Has Basement	Yes
Basement	Full, Finished

Exterior

Exterior	Wood, Hardie Board Siding
Exterior Features	Back Lane, Fenced, Flat Site, Park/Reserve, Playground Nearby,

	Schools, Shopping Nearby
Roof	Asphalt Shingles
Construction	Wood, Hardie Board Siding
Foundation	Concrete Perimeter

School Information

Elementary	Glenora School
Middle	Westminster School
High	Ross Sheppard School

Additional Information

Date Listed	July 8th, 2025
Days on Market	12
Zoning	Zone 11

DATA IS DEEMED RELIABLE BUT IS NOT GUARANTEED ACCURATE BY THE REALTORS® ASSOCIATION OF EDMONTON. COPYRIGHT 2025 BY THE REALTORS® ASSOCIATION OF EDMONTON. ALL RIGHTS RESERVED. Trademarks are owned or controlled by the Canadian Real Estate Association (CREA) and identify real estate professionals who are members of CREA (REALTOR®, REALTORS®) and/or the quality of services they provide (MLS®, Multiple Listing Service®)

Listing information last updated on July 20th, 2025 at 5:32pm MDT