

\$3,700,000 - 9523 103 Avenue, Edmonton

MLS® #E4447561

\$3,700,000

0 Bedroom, 0.00 Bathroom,
Land Commercial on 0.00 Acres

Boyle Street, Edmonton, AB

An exceptional +-0.92-acre (40,353.9 sq ft), full city block awaits your vision! This rare offering includes 10 adjacent lots at: 9522, 9524, 9528, 9530, 9534, 9536, 9542, 9544, 9523-103 Ave and 9548-102A Ave. Ideally located along a pedestrian-oriented corridor, this site is perfect for mixed-use development. Enjoy excellent connectivity with Edmonton's River Valley (Louise McKinney Park) and the future Quarters LRT stop (Valley Line) just a walk away. The property also fronts the Downtown Bike Network, a plus for active commuters. Such an opportunity in downtown Edmonton is truly rare!

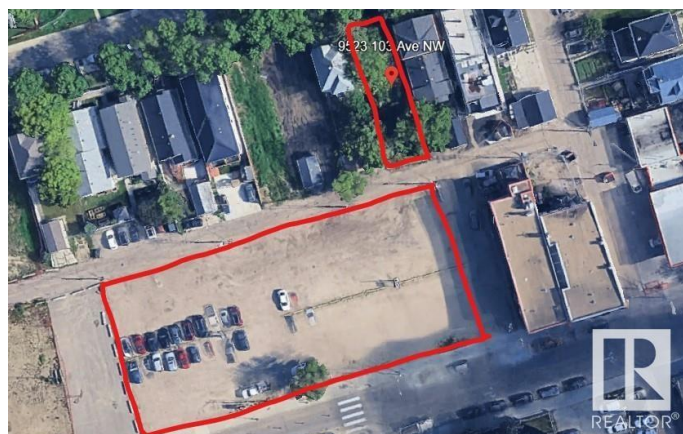
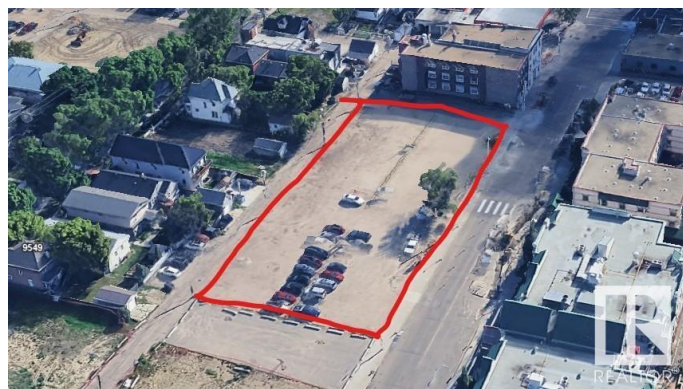
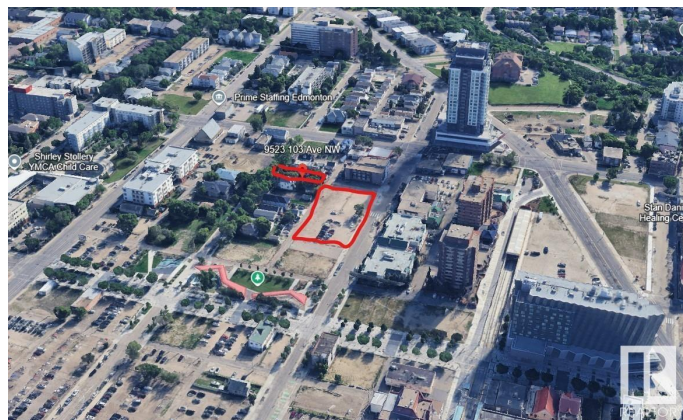
Built in 2025

Essential Information

| | |
|------------|-----------------|
| MLS® # | E4447561 |
| Price | \$3,700,000 |
| Bathrooms | 0.00 |
| Acres | 0.00 |
| Year Built | 2025 |
| Type | Land Commercial |
| Status | Active |

Community Information

| | |
|---------|-----------------|
| Address | 9523 103 Avenue |
| Area | Edmonton |



| | |
|-------------|--------------|
| Subdivision | Boyle Street |
| City | Edmonton |
| County | ALBERTA |
| Province | AB |
| Postal Code | T5H 0G8 |

Exterior

| | |
|--------------|-------------|
| Exterior | See Remarks |
| Construction | See Remarks |

Additional Information

| | |
|----------------|-----------------|
| Date Listed | July 13th, 2025 |
| Days on Market | 12 |
| Zoning | Zone 13 |

DATA IS DEEMED RELIABLE BUT IS NOT GUARANTEED ACCURATE BY THE REALTORS® ASSOCIATION OF EDMONTON. COPYRIGHT 2025 BY THE REALTORS® ASSOCIATION OF EDMONTON. ALL RIGHTS RESERVED.Trademarks are owned or controlled by the Canadian Real Estate Association (CREA) and identify real estate professionals who are members of CREA (REALTOR®, REALTORS®) and/or the quality of services they provide (MLS®, Multiple Listing Service®)

Listing information last updated on July 25th, 2025 at 4:02am MDT