

\$389,900 - 13236 115 Avenue, Edmonton

MLS® #E4454035

\$389,900

4 Bedroom, 2.00 Bathroom, 988 sqft

Single Family on 0.00 Acres

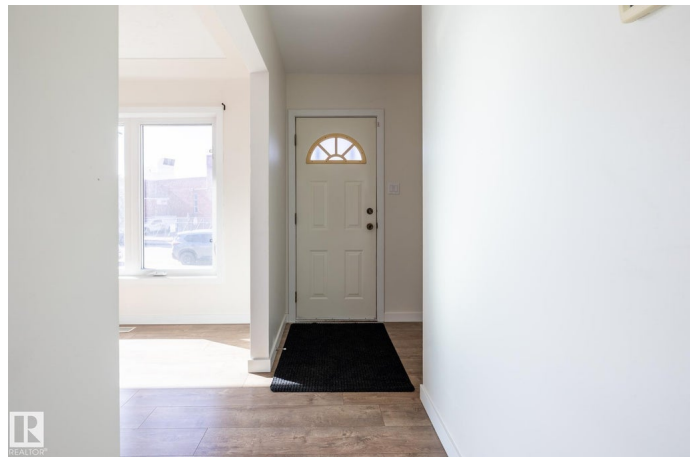
Woodcroft, Edmonton, AB

A SUPERB UPGRADED FAMILY HOME IN THE DESIREABLE NEIGHBORHOOD OF WOODCROFT. This 988 sq ft 4 bedroom, 2 bath bungalow has many upgrades: vinyl windows; flooring; bathrooms; recent painting; shingles on house & garage; garage doors & garage man-door. The downstairs can easily be changed to an in-law suite. This home sits on a 50 ft x 125 ft corner lot so would be ideal for sub-dividing and re-development. The corner lot also allows easy access to the garage and the RV parking. You will be close to everything: schools; shopping; medical; restaurants; parks; Telus Science. Check this family home out.

Built in 1954

Essential Information

| | |
|----------------|------------------------|
| MLS® # | E4454035 |
| Price | \$389,900 |
| Bedrooms | 4 |
| Bathrooms | 2.00 |
| Full Baths | 2 |
| Square Footage | 988 |
| Acres | 0.00 |
| Year Built | 1954 |
| Type | Single Family |
| Sub-Type | Detached Single Family |



Style Bungalow
Status Active

Community Information

Address 13236 115 Avenue
Area Edmonton
Subdivision Woodcroft
City Edmonton
County ALBERTA
Province AB
Postal Code T5M 3A6

Amenities

Amenities On Street Parking, Deck, No Animal Home, No Smoking Home, R.V. Storage, Vinyl Windows
Parking Spaces 6
Parking Double Garage Detached, RV Parking

Interior

Appliances Dishwasher-Built-In, Dryer, Garage Opener, Hood Fan, Refrigerator, Stove-Electric, Washer
Heating Forced Air-1, Natural Gas
Stories 2
Has Basement Yes
Basement Full, Finished

Exterior

Exterior Wood, Stucco
Exterior Features Back Lane, Corner Lot, Fenced, Landscaped, Playground Nearby, Public Transportation, Schools, Shopping Nearby
Roof Asphalt Shingles
Construction Wood, Stucco
Foundation Concrete Perimeter

Additional Information

Date Listed August 21st, 2025
Days on Market 10
Zoning Zone 07

DATA IS DEEMED RELIABLE BUT IS NOT GUARANTEED ACCURATE BY THE REALTORS® ASSOCIATION OF EDMONTON. COPYRIGHT 2025 BY THE REALTORS® ASSOCIATION OF EDMONTON. ALL RIGHTS

RESERVED. Trademarks are owned or controlled by the Canadian Real Estate Association (CREA) and identify real estate professionals who are members of CREA (REALTOR®®, REALTORS®®) and/or the quality of services they provide (MLS®®, Multiple Listing Service®®)

Listing information last updated on August 31st, 2025 at 5:47pm MDT