

# \$515,000 - 1403 11503 100 Avenue, Edmonton

MLS® #E4459613

## \$515,000

2 Bedroom, 2.00 Bathroom, 1,936 sqft  
Condo / Townhouse on 0.00 Acres

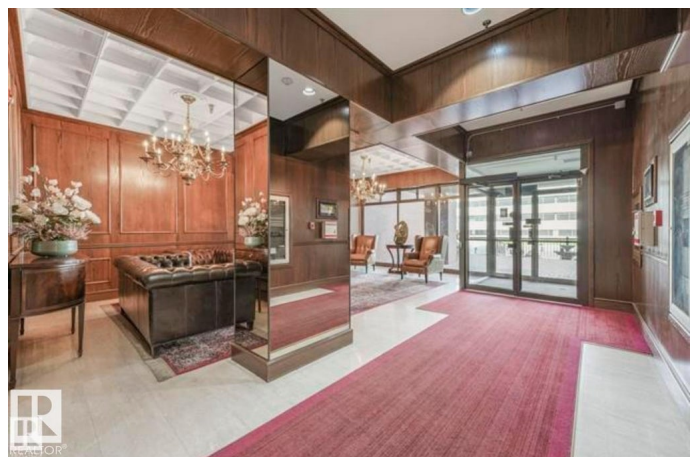
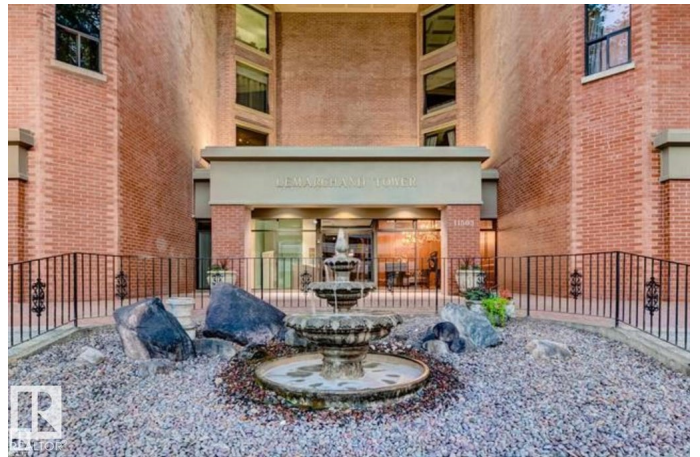
WÃ@hkwÃªntÃ´win, Edmonton, AB

Prestigious Le Marchand Tower with Beautiful Views! Elegance Abounds in this luxurious 1935 sq ft sprawling property. The Grand Entrance brings you to the open concept living space with the den overlooking the sunken living area and dining room flowing into the large kitchen filled with plenty of counter space, cabinets, ample storage plus pantry room. There are 2 generous bedrooms with the primary suite boasting a 5 piece ensuite with walk-in shower, jetted tub and cedar closet. The building offers a large social/entertainment room and guest suite for your out of town guests to Enjoy their private space. Overlooking the river valley and steps to every amenity you wish to entertain, this property is a Treasure at your fingertips.

Built in 1980

### Essential Information

MLS® #	E4459613
Price	\$515,000
Bedrooms	2
Bathrooms	2.00
Full Baths	2
Square Footage	1,936
Acres	0.00
Year Built	1980



Type	Condo / Townhouse
Sub-Type	Apartment High Rise
Style	Single Level Apartment
Status	Active

### Community Information

Address	1403 11503 100 Avenue
Area	Edmonton
Subdivision	W&hkw&ant&win
City	Edmonton
County	ALBERTA
Province	AB
Postal Code	T5K 2K7

### Amenities

Amenities	Guest Suite, No Animal Home, No Smoking Home, Parking-Visitor, Party Room, Patio, Secured Parking, Security Door
Parking Spaces	1
Parking	Underground

### Interior

Interior Features	ensuite bathroom
Appliances	Dishwasher-Built-In, Dryer, Refrigerator, Stove-Electric, Washer, Window Coverings
Heating	Fan Coil, Hot Water, Natural Gas
# of Stories	17
Stories	1
Has Basement	Yes
Basement	None, No Basement

### Exterior

Exterior	Concrete, Brick
Exterior Features	Golf Nearby, Hillside, Landscaped, Park/Reserve, Picnic Area, Public Transportation, River Valley View, Shopping Nearby, View Downtown
Roof	Unknown
Construction	Concrete, Brick
Foundation	Concrete Perimeter

### Additional Information

Date Listed	September 26th, 2025
-------------	----------------------

Days on Market	15
Zoning	Zone 12
Condo Fee	\$1,403

DATA IS DEEMED RELIABLE BUT IS NOT GUARANTEED ACCURATE BY THE REALTORS® ASSOCIATION OF EDMONTON. COPYRIGHT 2025 BY THE REALTORS® ASSOCIATION OF EDMONTON. ALL RIGHTS RESERVED. Trademarks are owned or controlled by the Canadian Real Estate Association (CREA) and identify real estate professionals who are members of CREA (REALTOR®, REALTORS®) and/or the quality of services they provide (MLS®, Multiple Listing Service®)

Listing information last updated on October 11th, 2025 at 2:17am MDT